

INTERNATIONAL SCOUTING COLLECTORS ASSOCIATION

JOURNAL

Vol 12, No. 1
March 2012



**Eagle Patches
of the BSA**





INTERNATIONAL SCOUTING COLLECTORS ASSOCIATION, INC



CHAIRMAN

TERRY GROVE, 2048 Shadyhill Terr., Winter Park, FL 32792
(321) 214-0056 groveagle@cfl.rr.com

PRESIDENT

CRAIG LEIGHTY, 800 Painted Shore Ct., Oakley, CA 94561
(925) 548-9966 craig.leighty@gmail.com

BOARD MEMBERS

BILL LOEBLE, 685 Flat Rock Rd., Covington, GA 30014-0908, (770) 385-9296, bloeble@beaverloc.com

BRUCE DORDICK, 916 Tannerie Run Rd., Ambler, PA 19002, (215) 628-8644 brucedor@aol.com

JAMES ELLIS, 405 Dublin Drive, Niles, MI 49120, (269) 683-1114, journaledit@aol.com

TOD JOHNSON, PO Box 10008, South Lake Tahoe, CA 96158, (650) 224-1400,
ISCAfinance@gmail.com

DAVE THOMAS, 5335 Spring Valley Rd., Dallas, TX 75254, (972) 991-2121, firstflaps@aol.com

JEF HECKINGER, P.O. Box 1492, Rockford, IL 61105, (815) 965-2121, heckinger6@aol.com

GENE BERMAN, 8801 35th Avenue, Jackson Heights, NY 11372, (718) 458-2292,
eugeneberman@verizon.net

BOB CYLKOWSKI, 1003 Hollycrest Dr., Champaign, IL 61821, (217) 778-8109,
baluga538@comcast.net

KIRK DOAN, 1201 Walnut St., #2500, Kansas City, MO 64100, (816) 691-2600,
kirkdoan@sbcglobal.net

TRACY MESLER, 1205 Cooke St., Nocona, TX 76255, (940) 825-4438,
tractmesler@yahoo.com

DAVE MINNIHAN, 2300 Fairview G202, Costa Mesa, CA 92626, (714) 641-4845,
Dave.Minnihan@gmail.com

JOHN PLEASANTS, 1478 Old Coleridge Rd., Siler City, NC 27344, (919) 742-5199,
johnjpleasants@hotmail.com

TICO PEREZ, 919 Wald Rd., Orlando, FL 32806, (407) 857-6498,
ticop@aol.com

JASON SPANGLER, 3685 Kale Drive, Lumberton, NC 28358, (910) 671-4919,
Santeeswapper@yahoo.com

JODY TUCKER, 4411 North 67th St., Kansas City, KS 66104, (913) 299-6692,
jody@manions.com

VICE PRESIDENTS:

Activities

Administration

Communications

Finance & Membership

Legal

Marketing

AREAS SERVED:

Advertising Sales

Web Site Management

The International Scouting Collectors Association Journal, "The ISCA Journal," (ISSN 1535-1092) is the official quarterly publication of the International Scouting Collectors Association, Inc. (ISCA) and is issued in March, June, September, and December by the International Scouting Collectors Association, Inc., 405 Dublin Lane, Niles, MI 49120. Periodicals Postage Paid at Niles, MI and at additional mailing offices. Annual membership dues are \$10. Member subscription for a printed copy of the International Scouting Collectors Association Journal is \$25.00 per year (50.00 per year for delivery outside the United States). The International Scouting Collectors Association, Inc. is a non-profit organization which is staffed and operated solely by volunteers and has no affiliation with the Boy Scouts of America. Views expressed in this publication are those of the author and do not necessarily represent the official position of the International Scouting Collectors Association, Inc. ©2012, International Scouting Collectors Association, Inc. Printed in the USA.

POSTMASTER: Send address changes to The International Scouting Collectors Association Journal, c/o James Ellis, 405 Dublin Lane, Niles, MI 49120

JOURNAL STAFF

EDITOR

JAMES ELLIS
405 Dublin Lane
Niles, MI 49120
Phone (269) 683-1114
journaledit@aol.com

ASSISTANT EDITOR

KEVIN DOYLE
1533 Kaminaka Drive
Honolulu, HI 96816
Phone (808) 735-3846
kevin@gilwell.com

COLUMNISTS

BADGE COLLECTORS CORNER: HAROLD DAW

7B International Tower, 23 South Bay Close, Repulse Bay,
Hong Kong, hdaw@hkis.edu.hk

COLLECTING CAMP PATCHES: BOB SHERMAN

4640 Main St., Stratford, CT 06614 (203) 378-9154
footdoc7@optonline.net

THE CSP CORNER: STEVE AUSTIN

8237 Tuna Path, Liverpool, NY 13090 (315) 456-1511 saustin@
twcny.rr.com

HOBBY TRENDS: ROY MORE

5150 Carpenter Rd., Ypsilanti, MI 48197 (734) 434-8772 ramore@
tspa.com

LOOKING FOR RED AND WHITES: BLAKE KEASEY

1380 Oak Grove Drive, Decatur, GA 30033 (404) 321-7433
cblakek@yahoo.com

MEMORABILIA COLLECTING ONLINE: KEVIN DOYLE

1533 Kaminaka Drive, Honolulu, HI 96816 (808) 735-3846
kevin@gilwell.com

NECKERCHIEF SLIDES: JOHN KOPPEN

12705 NW Puddy Gulch Rd., Yamhill, OR 97148 (503) 662-3953
mrncslide@netscape.net

ORDER OF THE ARROW NEWS: DAVE MINNIHAN & BRUCE SHELLEY

2300 Fairview, G202, Costa Mesa, CA 92626 (714) 641-4845
dave.minnihan@gmail.com

WAY BACK WHEN: DAVID C. SCOTT

6636 Briar Cove Drive, Dallas, TX 75254 (214) 616-0161
dcscott@redhonor.com

WORLD JAMBOREE CONNECTIONS: NEIL LARSEN

4332 Marigold Ave, Vadnais Heights, MN 55127-3540

ON THE INSIDE

FEATURES

Call for Nominations - 2012 ISCA DSA	6
Identifying the Cut Edge Square Eagle Patch	8
Blue Plastics (Type H) Merit Badges	20

COLUMNS

Chairman's and President's Message	4
ISCA News	5
TOR Calendar	7
World Jamboree Connections	14
Way Back When	16
Looking For Red & Whites	19
OA News	21
Collecting Camp Patches	26
CSP Corner	28
Advertisements	32

Publication and Advertising Deadlines

	ADVERTISING	EDITORIAL
Vol. 12, No. 2	04/01/2012	04/15/2012
Vol. 12, No. 3	07/01/2012	07/15/2012

ISCA Journal Submission Guidelines

Submissions should be made to the ISCA Journal Editor. Materials should be submitted in the following manner, unless prior arrangements are made:

- Text should be submitted through e-mail, or on disk, in a text file or MS-WORD form. PC platform only.
- Images should be submitted separately and not embedded in text files. All images must be scanned at 300 dpi and saved at a high quality, in a tiff or jpeg format. If there are limited images, high quality hard copy can be submitted.
- A desired layout can be submitted, but ISCA reserves the right to edit material or layout.
- All submissions must be made in advance of the submission deadline. No exceptions will be made.
- The Editor is available to assist writers regarding the preparation of articles and submission of materials.
- Submission materials will be returned if requested. The International Scouting Collectors Association, Inc. retains copyright over all materials published in the ISCA Journal, unless express written permission for use is given.

Advertising Rates

Full Page	165.00
Half Page	\$82.50
1/4 Page	\$41.25
1/4 Page for TOR	\$25.00

Special placement fees 50-200% All advertising submissions should be made to the Advertising Manager and meet the ISCA Journal submission guidelines and deadlines.

CHAIRMAN'S & PRESIDENT'S MESSAGE



Terry Grove
Chairman

2012 NOAC Trade-O-Ree: Everything is proceeding as planned for the ISCA sponsored NOAC Trade-O-Ree (Friday, July 27th through Monday, July 30th). As of this writing, 54% of the tables have been reserved (with still almost six months to go) and we expect the pace to pick up as it gets closer to NOAC. If you are considering reserving a table, do it quickly on the ISCA website before all of the good ones go. As mentioned in the last Journal we'll be in the Munn Ice Hockey arena at Michigan State University just across the street from the Breslin Center where contingent registration will occur on Monday, the opening day of NOAC. We have reserved a big block of rooms at a number of local hotels/motels for the weekend – see the list and the special block rates on the ISCA website.



Craig Leighty
President

In addition, we'll have special areas for lodges to sell lodge memorabilia (for just an hour or for the entire trade-o-ree at no-charge to lodges). PLEASE PASS THE MESSAGE ALONG TO LODGE CONTINGENTS SO THEY CAN COME EARLY AND SELL.

Rick Bedsworth (kwtrdr@gmail.com) is the onsite Trade-o-ree Chair and he is looking for lots of help to run the trade-o-ree. We have openings for just the trade-o-ree and also some openings that would include the trade-o-ree and all of NOAC. So, if you would like to be on full time NOAC staff, here is your opportunity. For both volunteer part time and full time staff position information, contact Rick for all of the details including how to apply, what jobs may be available, etc.

Check out the ISCA website for all of the trade-o-ree details including a Frequently Asked Questions, the latest table diagram with who has already reserved a spot and where they'll be, a list of the local hotels/motels and a flyer that you can download to take to local events to help promote it.

Note: Anyone that volunteers to help (for a minimum of 2 hours sometime during the trade-o-ree) will get a free ISCA ID badge and for an additional two hours, a free special color border NOAC Trade-o-ree patch. Send an email to Rick to volunteer to help and/or if you have any questions.

Ninth ISCA Convention, Annual Board Meeting and Dallas Trade-O-Ree: ISCA held its 9th Annual Convention in Dallas in conjunction with the 34th Dallas Trade-o-ree in January. The Convention and Trade-O-Ree was very well attended with people coming from all over the country. An ISCA Board meeting was held prior to the Trade-o-ree and a total of five workshops were held during the Trade-o-ree. First was an open session on ISCA with questions and answers about the NOAC Trade-o-ree, and ISCA's role in the 2013 National Jamboree including an important announcement about the evening trading activity (see the 2013 Jamboree paragraph below). The ISCA open session was followed by: "Baden Powell Things" – Dr. Hal Yocum; "Eagle Patches – A New Identification and Numbering System" – Terry Grove, Ron Oslin and Jim Erickson; "Owning and Operating a Patch company" – Kelly Williams; and "Blue Book 2.0" – Roy More. Ron Aldridge and Dave Thomas as usual hosted the TOR and did a great job of including ISCA.

Of special note, during the board meeting, a new ISCA Ethics policy was approved. It is in addition to the current ISCA policy (where ISCA members can lodge complaints against other ISCA members); the new policy adds the ability so any board member can bring a matter before the board to be evaluated against the ISCA Code of Ethics.

Also, during the board meeting, it was announced that a new regional structure is being implemented under the guidance of VP Activities, Bill Loeb. More details will be forth coming, but the new Regional Coordinators are as follows: Northeast Region - Greg Anthony (greg.anthony@hp.com), Southern Region - Bill Biggerstaff (cloverleafdogs@yahoo.com), Central Region - Kory Lewis (broadkawvalley@gmail.com) and Western Region - Rick Bedsworth (kwtrdr@gmail.com). Each regional coordinator will be looking for assistance, so if you are interested in helping, contact them directly.

2013 National Scout Jamboree: As mentioned in the last Journal, a lot of discussions have already occurred pertaining to the 2013 BSA National Scout Jamboree at the Bechtel Summit in West Virginia. See the following for some key information:

Patch trading at the Summit for the 2013 National Scout Jamboree will for the first time become an official program activity administered by the Summit Program Leadership Action Team (S.P.L.A.T.) in an "Arena Experience" area. This arena experience area will be the location for a number of great activities such as games, entertainment, special presentations and patch trading.

The patch trading activity will be limited to specific times during the jamboree and will be consolidated into designated area(s) in a monitored environment. Staff for this activity will ensure that patch trading is conducted in accordance with BSA guidelines. For the 2013 jamboree, youth-to-adult trading will be authorized in the monitored patch trading venue. It will not be allowed at any other time or place during the jamboree. (Continued on Page 31)

ISCA TO HOST 2012 NOAC TOR

ISCA will again be hosting the Trade-o-ree on-site in advance of NOAC at the Michigan State University, East Lansing, MI.

Since NOAC will officially start on Monday, July 30, 2012, (and will conclude on Saturday, August 4th), it will be a four day trade-o-ree starting Friday afternoon and ending on Monday, afternoon.

ISCA members have first pick of the tables and can now purchase their tables by going to the members only section of the ISCA website: www.scouttrader.org

NEW TOR ADVERTISING RATE APPROVED

At the Annual Board Meeting in January, the ISCA Board approved a new reduced rate for Trade-O-Ree sponsors wanting to advertise their TOR in the ISCA Journal. Effective with the June Journal, TOR sponsors can place a quarter-page ad in the ISCA Journal for only \$25.00 per edition. This new rate applies only to quarter-page ads. The cost of half and full page ads remains unchanged.

So if you want to promote your TOR to the fullest, consider placing an ad in the ISCA Journal. Contact the Journal editor at journaledit@aol.com for more information. Advertising deadlines are shown on page 3 of the Journal.

THIS AND THAT . . .

As of March 1, there are only 149 days until the start of the 2012 NOAC TOR.

All ISCA Journals are now available for download in the Members Only Section of the ISCA website at www.scouttrader.org.

ISCA needs members to volunteer at both the 2012 NOAC and the 2013 National Scout Jamboree. See the President's and Chairman's Message on the facing page for more information.

We're always looking for new authors. Interested? Contact the Journal editor.

MEMBERSHIP APPLICATIONS / RENEWALS

Check your mailing label - if it reads "Dues Paid Thru 03/30/2012" **THIS IS YOUR LAST ISSUE** unless you renew immediately.

A renewal reminder may also be mailed, but don't count on it and risk missing an issue! Now would be a good time to check your collecting codes too and update them if needed.

We no longer backdate memberships, so if you miss an issue you'll have to buy it online from the ISCA store.

To join ISCA or renew your membership please go to www.ScoutTrader.org or send your application*/renewal to:

ISCA Membership
P.O. Box 10008, So. Lake Tahoe, CA 96158
(*\$35 for a yearly subscription, \$10 for online subscription,
\$25 for printed subscription if a life member, \$60 for foreign subscription.*)

DO NOT SEND RENEWALS TO THE EDITOR

**Applications are available online or from the ISCA Membership Vice President at the above address.*

NOMINATIONS FOR THE 2012 ISCA DISTINGUISHED SERVICE AWARD

Who:

Any active member of ISCA who has not received the award before or who is not serving on the 2012 Award Nominating Committee.

What:

The International Scouting Collectors Association's "Scouting Memorabilia Distinguished Service Award."

This award was created to recognize those individuals that have contributed significantly to the hobby of Scouting memorabilia collecting and to Scouting itself.

Recipients of this award are collectors of Scouting memorabilia who have distinguished themselves through their diligent work and involvement in Scouting; through the high quality of their memorabilia collections; through their unselfish contribution to the knowledge base of collecting by sharing information, displaying their collections, and writing articles and books; through their long-standing service to Scouting memorabilia organizations; and, overall, through their presence as a positive force in the Scouting memorabilia collecting hobby. They must be active members of ISCA.

When and Where:

The ISCA Distinguished Service Award is presented annually at a national event. Past venues have included the Dallas Trade-O-Ree and the PRE-NOAC Trade-O-Ree.

How:

Under ISCA's bylaws, the ISCA Chairman of the Board of Directors appoints the Chairman of the Nominating Committee for a fixed term. The Nominating Committee Chairman will then appoint a committee of members with the concurrence of the ISCA Chairman of the Board of Directors. Members can succeed themselves on the committee. This year's committee is chaired by Bruce Dordick.

Nominations will be made to the Nominating Committee directly by the members of ISCA. The nomination deadline, determined by the Committee, is April 10, 2012. Nominations may be hand-delivered, mailed, or emailed and must be in writing to be considered. Each nomination should include the personal contact information for the candidate and a short synopsis of the nominee's involvement in Scouting and how this person has contributed to the hobby of Scouting memorabilia collecting.

Nominations should be sent to Bruce Dordick, 916 Tannerie Run Rd., Ambler, PA 19002 or emailed to brucedor@aol.com.

Once the nominations are received:

- (a) The Nominating Committee, based on the written materials presented on behalf of the candidates, will recommend no less than three candidates to the ISCA Chairman of the Board and the ISCA President for concurrence.
- (b) Following concurrence by the ISCA Chairman and the ISCA President, the Nominating Committee will present the candidates to the membership of ISCA in the June issue of the ISCA Journal and on the ISCA Website.
- (c) The voting deadline will be listed in the Journal and on the ISCA website.

Each member of ISCA may cast one vote. Voting will require ISCA membership number and name, and can be done in one of three ways:

1. snail mail to the Chairman of the Nominating Committee
2. email to the Chairman of the Nominating Committee
3. voting on the ISCA website – the website will contain clear instructions for electronic ballots.

The person receiving the most votes – the plurality – will be the DSA recipient. In the case of a tie vote, a majority vote by the Nominating Committee with certification of the ISCA Chairman of the Board and ISCA President will determine the winner.

PRIOR RECIPIENTS

ISCA salutes the prior recipients of the ISCA Scouting Memorabilia Distinguished Service Award (including predecessor awards) listed below:

Carmella Russo
E. Forest Reynolds
Elmer Fennert
Paul Myers
Dave Leubitz
Bill Price
John Sell
Bernie Miller
Raymond Lee
Brian Lee
Don Isbell
Mike Fulco
Cliff Alexander
Paul Kramer
Jack Mitzman
Prince Watkins
George Boxer
Alan O'Connor
Bill Kern
Ken Wiltz
Harry Thorsen
Dave Minnihan
Dwight Bischel
Gene Berman
Albertus Hoogveen
Mitch Reis
Conley Williams
Bill Topkis
Terry Grove
John Pannell
Kelly Williams
Craig Leighty
Jeff Morley
Roy More
Chris Jensen
Jim Ellis
Doug Krutilek
Bruce Dordick
Ron Aldridge
Bob Hannah

The award winners are listed in order from the first to most recent. Some individuals were awarded the award more than once since they received it from one or more of the predecessor organizations that now make up ISCA.

Connecticut-- 10th Annual Friends of JN Webster Trade-O-Ree

Dates: 3/3/2012

Location: Loyal Order of Moose Hall, 115 Fivthville Rd., Bozrah, Connecticut

Contact: Harry Segerstrom Jr., #1 Hanover-Versailles Rd., Baltic, CT 06330 (860) 822-6235, paratrooper325@netzero.net

Missouri-- SOUTHEAST MISSOURI 17TH ANNUAL TOR

Dates: 3/3/2012 thru 3/4/2012

Location: V.F.W Hall 1049 N Kingshighway, Cape Girardeau, Missouri

Contact: Jerry Hampton, 1305 Kingsway, Cape Girardeau, MO 63701, (573) 334-5392 or (573) 450-6763

Oklahoma-- Tulsa (T-Town) Trade-O-Ree

Dates: 3/9/2012 thru 3/10/2012

Location: Econo Lodge Conference Room, 11620 E. Skelly Drive (I-44 at 11th Street), Tulsa, Oklahoma

Contact: Larry Trook, 6410 E. 165th, Bixby, OK 74008, (918) 636-5480, besonleno@cox.net or Mike Cale, AL (918) 272-3181, mikecale@cox.net

Pennsylvania-- 28th. Annual Pittsburgh Trade-O-Ree

Dates: 3/9/2012 thru 3/10/2012

Location: Holiday Inn Airport, 8256 University Blvd., Coraopolis, PA.

Contact: Conrad Auel, 1516 Jones St., Monessen, PA 15062 (412) 877-0626, familynut@comcast.net or Steve DeWick, 126 Sheldon Ave., Pittsburgh, PA 15220 (412) 921-2089, steven.dewick@bipc.com

New Jersey-- Northeast Trade-O-Ree

Dates: 3/11/2012

Location: Guardian Angel Church, East Allendale Ave., Allendale, New Jersey

Contact: Ed Quinn, (201) 845-7777, nersmuseum@aol.com or Adam Adel, 13soaringeagle@gmail.com

Michigan-- 2012 Great Lakes Council – 4th Annual Boy Scout Memorabilia Show

Dates: 3/16/2012 thru 3/17/2012

Location: D-bar-A Scout Ranch in the Wyckoff Lodge Dining Hall, 880 E. Sutton Road, Metamora, Michigan

Contact: Scott Wheeler, 28453 Cotton Rd., Chesterfield, MI 48047 (586) 817-0654, panterat97@juno.com or Denver Laabs, 1100 County Center Drive, West Waterford, MI 48328 (248) 338-0035, denver.laabs@scouting.org

Wisconsin-- Midwest Tradefest

Dates: 3/23/2012 thru 3/24/2012

Location: Immaculate Heart of Mary School Gym, 4913 Schofield Road, Monona, Wisconsin

Contact: Kurt Hansen, 1209 Sweetbriar Road, Madison, WI 53705 (608) 238-9481, kwh96@hotmail.com

Oregon-- Cascade Memorial Trade-O-Ree

Dates: 3/24/2012

Location: St. Mary School Gym, St. Mary School, 1066 N 6th Ave., Stayton, Oregon

Contact: Todd Hatfield, PO Box 715, Lyons, OR 97358 (503) 859-2443, that@wvi.com or Scott West (503) 871-2066, ww2scott@wvi.com

Pennsylvania-- Allentown Trade-O-Ree

Dates: 4/14/2012

Location: Jordan Lutheran Church, 5103 Snowdrift Rd., Orefield, Pennsylvania

Contact: Mike Best or Scott Best, 5233 Spruce St., Schnecksville, PA 18078 (610) 767-6079, tradeoree@witauchsoman.org

Missouri-- Greater Kansas City Area Trade-O-Ree

Dates: 5/4/2012 thru 5/5/2012

Location: Hillside Christian Church Gym, 900 NE Vivion Rd, Kansas City, Missouri

Contact: Ryan Meador, 11315 N. Holly, Kansas City, MO 64155 (816) 734-1032, meadorre@yahoo.com

California-- Ta Tanka Lodge 488 Trade-O-Ree

Dates: 5/5/2012

Location: Sierra Madre Congregational Church, 170 W. Sierra Madre Blvd., Sierra Madre, California

Contact: Dave Minnihan, 2300 Fairview Rd., #G-202, Costa Mesa, CA 92626, (714) 641-4845, dave.minnihan@gmail.com

Connecticut-- Owaneco Trade-O-Ree

Dates: 5/12/2012

Location: 525 Orange Center Road, Orange, Connecticut

Contact: Robert Emerson, 101 Ruby Road, West Haven, CT 06516, emerson@owaneco.org

Illinois-- Calumet Council's 23rd Annual Boy Scout Memorabilia Show & Swap Meet

Dates: 5/25/2012 thru 5/26/2012

Location: St. Christopher School Gymnasium located behind (north) of St. Christopher Catholic Church St. Christopher School, 14611 Keeler Avenue, Midlothian, Illinois

Contact: Jim Scherbarth, 449 Tamarack Street, Park Forest, IL 60466, (708) 747-1904, jscherba@ford.com or Lynn (Swoop) Delamano, 13047 Hawk Lane, Creal, IL 62922 (708) 415-2594

Texas-- Lone Star Trade-O-Ree

Dates: 6/1/2012 thru 6/2/2012

Location: St Francis Church (Family Life Center), 861 Wildwood Ln., Grapevine, Texas

Contact: John Ryan, P O Box 1062, Colleyville, TX 76034 (817) 939-5673, thetexaswebguy@yahoo.com

Michigan-- 2012 NOAC Trade-O-Ree

Dates: 7/27/2012 thru 7/30/2012

Location: Munn Ice Hockey Arena (located across the street from Breslin Basketball Arena where contingent registration will occur), Michigan State University, 1 Chestnut Rd., East Lansing, MI 48824 East Lansing, Michigan

Contact: Craig Leighty, 4529 Coddington Loop #108, Wilmington, NC 28405, (925) 548-9966, craig.leighty@gmail.com or Tod Johnson, PO Box 10008, So. Lake Tahoe, CA 96158, todjohnson@yahoo.com

TO HAVE YOUR TRADE-O-REE LISTED HERE, LIST IT ON THE ISCA WEBSITE AT WWW.SCOUTTRADER.ORG

Identifying the Cut-Edge Square Eagle Patch

by TERRY GROVE, ISCA #0034L; RON OSLIN, ISCA #5954; and JIM ERIKSON, ISCA #5113

The purpose of this article is to introduce a system for identification of all the cut-edge Eagle patches. The system will enable displayers, historians, and collectors to share information with each other about potential trades, sales, and purchases. It will give us a common language and therefore make it much easier to communicate.

As a displayer, historian and/or collector you can make the decision about what you want to collect, but as researchers, we feel obligated to share with you the most detailed list we can so that you can make an educated choice on the depth and breadth of patches you want to collect and/or display. To that end, what follows is the best research we have been able to assemble. We believe that it is complete, but understand that there may be patches we have not seen, but you, the reader, have or know about. The authors would appreciate your communicating to us anything you feel has been omitted.

HISTORY

The **first** Eagle Scout was Arthur Rose Eldred. He passed his Board of Review in June and the **first** Eagle Scout medal was presented to him on Labor Day, September 6, 1912. The **first** Eagle Scout patch was presented to the Scouts who were representing the Boy Scouts of America to the World Jamboree in Denmark, 1924.

The first Eagle patch was given to each Scout who had achieved the rank of Eagle Scout and was a member of the USA contingent to the 1924 World Jamboree. It was sewn onto a brand new merit badge sash given to each boy. The Eagle patch and the merit badge sash were new items for the Boy Scouts of America program.

The sash – 56 were made – was special and distinctive because the merit badges were not sewn onto the existing sash like today. The merit badges were sewn together in strips either three wide or two wide. Then those strips were sewn into the actual two-ply sash as part of the sash. Then a bias was applied to the edge of the sash to hold the two-plys together.

The Eagle patch was sewn at the top center of the sash. It was not sewn onto the uniform. The Eagle medal was worn on the uniform at dress moments for the members of the contingent.

The first Eagle Scout patch is now regarded as the most difficult to find. It is believed that all the patches that were made were placed on sashes and there are no mint condition patches available off sash. It is believed that approximately 30 of the 56 contingent members were Eagle Scouts and received sashes with the Eagle patch on them.

The unique design of this particular patch makes it stand-alone. The scroll “smile” breaks through the oval it touches. (Figure 1) There is a “good turn” knot hanging from the scroll. The embroidery on the back of the patch is unique as well. (Figure 2)

TYPES

In the past, the hobby identified two types of cut-edge square patches. The new system breaks apart the old Type 2 patches into Type 2 and Type 3. As a result, there will be three types of cut edge Eagle patches in the new system. Within each Type category there will be several sub-categories. The sub-categories will be determined by type of base material used for the patch, color of dye used on the base material, and the backs of the patches.

Type 1 - The patch design has “BSA” across the chest of the Eagle. Along with the first Eagle patch described above, there are two more design variations in the Type 1. The Type 1-Tan2 is exactly the same design as the first Eagle patch except there is no knot hanging from the scroll. (Figure 3) The Type 1-TAN3 is the most common design. It features no knot hanging from the scroll and the scroll does NOT break through the inner oval. (Figure 4)

The Type 1-TAN1 & TAN2 have a unique stitching pattern on the back in the oval that differs from the stitching pattern on the Type 1-TAN3. (Figure 5)

Lastly, it needs to be noted that on the White, Blue and TAN3 Type 1's, the “Be Prepared” is both legible and illegible.

Type 2 - The patch design has the words “Eagle Scout Boy Scouts of America” in the outer oval and the thread is silk. The silk thread is easily identified by looking on the back of the patch and noticing the loose weave of the thread and the loose ends of the thread. (Figure 6)

In 1939, the Boy Scouts of America made a choice to stop using imported silk thread and instructed the manufacturer to use cotton thread in all of the BSA patches.

Type 3 - The patch design is the same as Type 2 with “Eagle Scout Boys Scouts of America” in the outer oval. However, the thread is cotton. The cotton thread can be identified by looking at the back of the patch and noticing that the thread is tight and there are no loose ends. (Figure 7)



Figure 1



Figure 2



Figure 3



Figure 5



Figure 4



Figure 6



Figure 7

Base Material

Type 1, 2, and 3 cut-edge Eagle patches were embroidered into several base materials.

There were two basic reasons: first, because of the United States participation in World War II and second, because of the depression in the late 20's that lasted into the 30's. Material for military use was in high demand; therefore, manufacturers of cloth changed the material's thread weight and tightness of the weave to help conserve cloth and speed up the manufacturing process. From 1924 to 1955, seven distinctly different cloth and felt materials were used to make the Eagle patch.

Wool Felt – Wool felt was used for all the Sea Scout patches in Type 1 – 3. The color is a very dark blue almost black. The color matched the fall-winter uniform of the Sea Scout.

Heavyweight – Heavyweight material was used in the Type 1 & 2 patches. Its use ended in approximately 1938 when the demand for material for uniforms became great. Unique to the heavyweight material is the tightness (density) of the thread weave. When a piece of heavyweight material is held up to a light, the light cannot be seen shining through the weave of the material.

Another characteristic of the heavyweight patch was the ink printing on the back of the material. The Boy Scout seal was printed on the back of the cloth and where there was not the seal, the twill lines had black ink defining them. (Figure 8) All Type 1 patches have this ink printing on the back and the Type 2 heavyweight does also until about 1937. From 1937 to 1939, when the heavyweight material was no longer used, there is no ink on the back of the material.

Lastly, the twill weave of the heavyweight material is established on the loom by having the horizontal thread cross over three vertical threads and then pass under one vertical thread. This can be easily seen with a trained eye or a magnifying glass. (Figure 9)

Depression Cloth – In 1933-34, a special lightweight cloth was introduced. The ink printing was continued on the back of the cloth, but the dense tight weave was loosened as fewer threads were used to make the material. Depression cloth can be held up to the light and the light will shine through the weave of the cloth easily. So it is distinguished by the light test and the printed ink seals and lines on the back of the material. (Figure 10)

The twill weave of the depression material is established on the loom by having the horizontal thread cross over three vertical threads and then pass under one vertical thread.

Lightweight – Lightweight material was introduced in the 1936-37 era. It is thought to be the result of the manufacturer's need to conserve resources due to the high demand for military uniforms and other war related clothing. Lightweight material also was easier to make and more could be made in less time. The ink printing on the back was also stopped. That helped with production cost and speed. The distinguishing characteristics of the lightweight material are the light test – light shines through easily – and there are no printed ink lines on the back of the cloth. (Figure 11)

The twill weave of the lightweight material is created by having the horizontal thread cross over three vertical threads and then pass under one vertical thread.

Fine Twill – In the past fine twill was known as "sand twill". The new system identifies the material as fine twill based on cloth manufacturer's terminology. Fine twill arrived about 1943 and lasted until 1946. Again, it is the cloth manufacturer making decisions about resources. Now the thread is not only woven loose but the actual diameter of the thread is lessened. The light test applied will let light shine through easily. There is no ink printing on the back.

The twill weave of the fine twill material is created by having the horizontal thread cross over two vertical threads and then pass under one vertical thread. (Figure 12)

War Cloth – War cloth is dated from 1944-46. It is the same loose weave as the fine twill, but the thread diameter is larger. However, War Cloth because of its loose weave did not hold up to wear and washing. The cloth was heavily starched and when washed tended to fall apart. There is no ink printing on the back.

The twill weave of the war material is created by having the horizontal thread cross over two vertical threads and then pass under one vertical thread. (Figure 13)

Post War Cloth – Post War Cloth is a lightweight. The light test result is light shining through the material. Because the cloth was lightweight it required the back to either be starched or have gauze applied. (Figure 14)

The twill weave of the post war material is created by having the horizontal thread cross over three vertical threads and then pass under one vertical thread.

Backing on the Base Material

Plain (1924-1943) – The back and the front of the base material is the same. There is nothing added. The material weave and thread were strong enough to give body to the patch and no additives were needed. (Figure 15)



Figure 8



Figure 9



Figure 10



Figure 11



Figure 12



Figure 13



Figure 14



Figure 15

Starched (1943-1946) – When the heavyweight material was changed and the lightweight materials came into use, it was quickly recognized that the material stiffness was less than acceptable. So, a layer of starch was added to give stiffness to the patch. The starch is water soluble, so patches that have been washed have varying amounts of residue of starch remaining. (Figure 16)

Gauze (1947-1955) – While the starch was helpful, by 1947 the application of gauze netting on the back of the patch provided the strength and consistency that was desired. The gauze plus the post war tightly woven material was perfect and lasted until the cut edge patches were replaced with new technology – rolled edge patches. (Figure 17)

Dye Color

Dye color is an interesting discussion because dyes change due to a variety of influences on the material and the dyes. So categorizing the dye colors will make for conversation. However, it is our best judgment that there are only 4 basic dye colors used for the cloth Eagle patch. Blue wool felt was used on the Seas Scout dress blue uniform.

TAN (TAN) – Tan dye was used from 1924 through 1930 and then again briefly from 1943-1946. The 1924 through 1930 use was with Type 1 patches and the 1943-46 use was with the Fine Twill patch only.

OLIVE (OLV) - Olive was introduced in 1930 with the Type 1 patches and continued in use through the Type 2 patches and also through the Type 3 patches until 1947. There are many shades of olive but it is distinct from the tan on one side and the green on the other side.

GREEN (GRN) – In the past we used the color olive khaki or khaki. Most people do not know those colors so we are using a more familiar color – green. The green dye began to appear in 1947 and continued through 1955 when the cut edge patches were replaced by the rolled edge colorful patches.

WHITE (WHT) – White was used from 1924 through 1955. The white patch was a Sea Scout patch and the color matched the spring-summer white dress uniform.

Using all this information, we have formulated a checklist which is at the end of this article. The checklist codes every possible combination of materials, dyes, backs and ink printing that is known to exist along with notes on those pieces that are not known to exist but could.

It is our hope that this list will become the standard list for the hobby and will be used by everyone to communicate. We recognize that there may be glitches in the list and the rationale, but this is our best thinking to date.

We are open to suggestions and corrections and additions. It is our goal to make the listing and the identifiers complete and usable by the time the next Journal appears.

The next Journal will have an article on the Rolled Edge patches and that identification system will be rolled out.

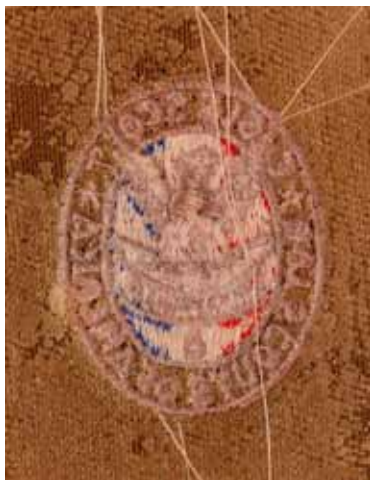


Figure 16



Figure 17

Eagle Scout Patches - Cut Edge

EDGE	TYPE	DATE	MATERIAL	INK PRINTING	STITCHING & WEAVE	BACK	COLOR	DESCRIPTION
Rectangle - No Words - "BSA"								
[]	cut	1-TAN1	1924	Heavyweight	Printed	plain	Tan	scroll breaks inner oval; hanging knot
[]	cut	1-TAN2	1924-25	Heavyweight	Printed	plain	Tan	scroll breaks inner oval; NO hanging knot
[]	cut	1-TAN3	1925-30	Heavyweight	Printed	plain	Tan	scroll does not break inner circle; NO knot; oval 38-39 mm top to bottom
[]	cut	1-WHT	1925-32	Heavyweight	NO print	plain	White	scroll does not break inner oval; NO knot (Sea Scout)
[]	cut	1-BLU	1925-32	Wool felt	NO print	plain	Blue	scroll does not break inner oval; NO knot (Sea Scout)
[]	cut	1-OLV	1930-32	Heavyweight	Printed	plain	Olive	scroll does not break inner oval; No knot; oval 40-41 mm top to bottom
Printed - Dark lines or seal exist on the back of the patch								
Rectangle - Silk Thread - "Boy Scouts of America - Eagle Scout"								
[*]	cut	2-WHT1	1933-35	Heavyweight	NO print	plain	White	silk thread; (Sea Scout)
[]	cut	2-WHT2	1936-39	Lightweight	NO print	plain	White	silk thread; (Sea Scout)
[]	cut	2-BLU	1933-39	Wool felt	NO print	plain	Blue	silk thread; (Sea Scout)
[]	cut	2-OLV1	1933-37	Heavyweight	Printed	plain	Olive	silk thread
[*]	cut	2-OLV2	1933-34	Depression Cloth (Lightweight)	Printed	plain	Olive	silk thread
[]	cut	2-OLV3	1937-38	Heavyweight	NO print	plain	Olive	silk thread
[]	cut	2-OLV4	1938-39	Lightweight	NO print	plain	Olive	silk thread

Note: HEAVYWEIGHT cloth when held to a light you cannot see through -- LIGHTWEIGHT cloth the light is easily seen -- PRINTED- Dark ink lines or seal exist on the back of the patch

2-TAN - Tan silk thread - patch is not known to exist

***2-Wht1 - Heavyweight cloth unprinted - patch is not known but could exist**

***2-OLV2 - Depression Cloth (Lightweight cloth unprinted) - patch is not known but could exist**

Rectangle - Cotton Thread - "Boy Scouts of America - Eagle Scout"

[]	cut	3-TAN2	1943-46	Fine twill	NO print	starched	Tan	cotton thread
[*]	cut	3-WHT1	1940-43	Lightweight	NO print	plain	White	cotton thread; (Sea Scout)
[]	cut	3-WHT2	1943-46	Fine twill	NO print	starched	White	cotton thread; (Sea Scout)
[]	cut	3-WHT3a	1944-46	War Cloth	NO print	gauze	White	cotton thread; (Sea Scout)
[]	cut	3-WHT3b	1947-55	Post War	NO print	gauze	White	cotton thread; (Sea Scout)
[]	cut	3-BLU1	1940-43	Wool felt	NO print	plain	Blue	cotton thread; (Sea Scout)
[]	cut	3-BLU2	1943-46	Wool felt	NO print	starched	Blue	cotton thread; (Sea Scout)
[]	cut	3-BLU3	1947-55	Wool felt	NO print	gauze	Blue	cotton thread; (Sea Scout)
[]	cut	3-OLV1	1940-41	Lightweight	NO print	plain	Olive	cotton thread
[]	cut	3-OLV2a	1942-43	Lightweight	NO print	starched	Olive	cotton thread; back thread is white
[*]	cut	3-OLV2b	1942-43	Lightweight	NO print	starched	Olive	cotton thread; back thread is black
[]	cut	3-OLV2c	1944-46	War Cloth	NO print	starched	Olive	cotton thread; back thread is white
[]	cut	3-OLV2d	1944-46	War Cloth	NO print	starched	Olive	cotton thread; back thread is black
[]	cut	3-GRN2	1947-55	Lightweight	NO print	starched	Green	cotton thread
[]	cut	3-GRN3	1947-55	Post War	NO print	gauze	Green	cotton thread

*** 3-WHT1 - Lightweight plain cloth back - patch could exist but not known**

*** 3-OLV2b - Lightweight plain starched back, black back thread - patch could exist but not known**

3-TAN1 - Tan plain Back not known to exist

3-OLV3 - Olive gauze back not known to exist



By
Neil W. Larsen
ISCA #0086L
 nwlarsen@comcast.net

World Jamboree Connections

22nd World Jamboree, Simply Scouting - Update

As promised in the December issue of the ISCA Journal, here are some USA items and a new Official World Jamboree item.

With that policy, most BSA units and staff did not produce any badges, pins or other items. Known exceptions include Venturing Crews from Western Region and IST members who produced badges. The BSA did issue six each of the special promotional SBR (Summit Bechtel Reserve) WSJ2011 badges to all youth members of their units for trading. The SBR site in West Virginia will be the site of the next BSA National Jamboree in 2013 and the World Jamboree in 2019.

As I reported in the previous issue, the BSA established a policy that NO unit badges were to be produced. A letter from the International Department to all Local Councils and Units titled "Policy on graphic identity for use by World Scout Jamboree participants" stated the following:

"No region-specific, council-specific, or unit-specific designs are permitted. Furthermore, the words "World Scout Jamboree" (or any variation thereof) or the abbreviation "WSJ" are not permitted. The policy applies to patches, t-shirts, bags, coins, hats, caps and other items as well as promotional materials, such as flyers, banners and signs."

Just before Christmas all of the World Scout Jamboree Memory Package pre-orders were sent via FedEx. The Jamboree Memory Package contained a 200-page hard-cover photo book, a DVD movie, and a DVD-ROM with extra material (pdf files of magazines, handbooks and "Jam-in" videos).

Since it is very difficult to determine which badges were authorized and which were not, I present the following list to the best of my knowledge. If anyone has information on additional items or corrections please contact me.

USA Group items

- __ Badge "SBR" Summit Bechtel Reserve WSJ2011, embroidered, c/e – 6 per BSA youth participant (Pictured)
- __ Badge Venturing logo, embroidered, cloud shape, gold c/e, trader
- __ Badge Venturing logo, embroidered, cloud shape, green c/e, trader
- __ Badge Venturing logo, embroidered, cloud shape, purple c/e, trader
- __ Badge Venturing logo, embroidered, square, gold r/e, worn on right sleeve
- __ Badge Venturing logo, embroidered, square, green r/e, worn on right sleeve
- __ Badge Venturing logo, embroidered, square, purple r/e, worn on right sleeve
- __ Badges Troop 70308, 6 piece set, 1 round, 5 arcs, embroidered, black r/e
- __ Coin Crew 70007, Geocache Geocoin, round, metal
- __ Pin Troop 70102, round metal

- __ Badge Mount Diablo Silverado Council, embroidered, JSP, silver r/e
- __ Badge National Capital Area Council, purple twill, embroidered, JSP, white r/e
- __ Badge Trapper Trails Council - Utah, embroidered, JSP, black r/e (Pictured)
- __ Badge Utah National Parks Council - Utah, embroidered, JSP, blue c/e
- __ Badge Western Los Angles County Council, embroidered, JSP, lt gray r/e
- __ Badge "World staff – Utah", embroidered, JSP, white c/e note: part of the 4 JSP Venturing set from Utah Councils

Visiting USA groups

- __ Badge USA Scouter Tour, embroidered, r/e

Notable USA Private Badges

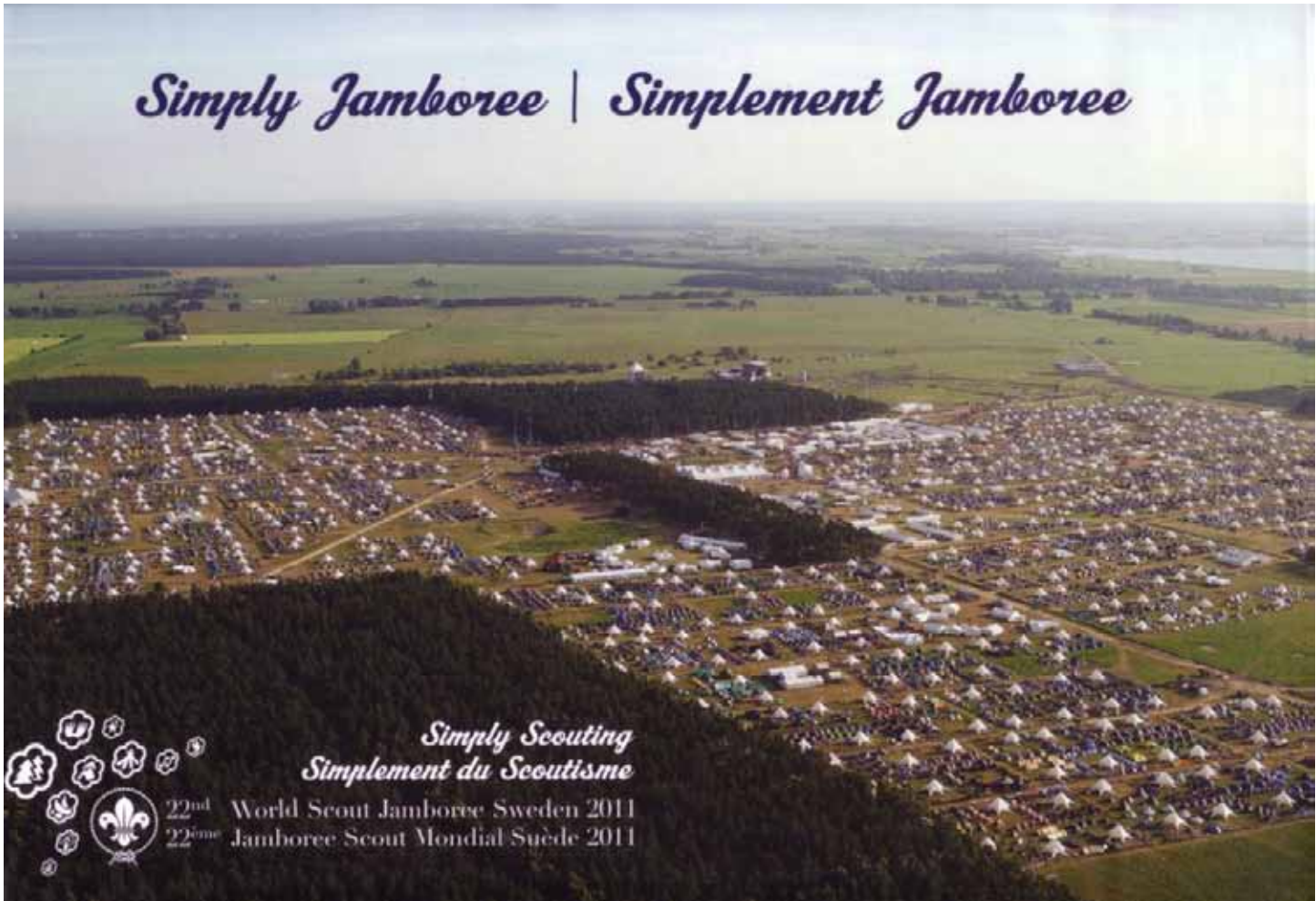
- __ Badge Atlanta Area Contingent, embroidered, JSP, red r/e
- __ Badge Atlanta Area Contingent, embroidered, JSP, yellow r/e
- __ Badge Las Vegas, "Nevada Test Site", embroidered, JSP, lt blue c/e
- __ Badge Las Vegas "Hoover Dam", embroidered, JSP, red c/e
- __ Badge Las Vegas "Elvis in Las Vegas", embroidered, JSP, orange c/e
- __ Badge Las Vegas "Area 51", embroidered, JSP, green c/e

BSA Council World Jamboree Badges

- __ Badge East Carolina Council, embroidered, JSP, black r/e
- __ Badge Far East Council, embroidered, JSP, lt gray r/e
- __ Badge Great Salt Lake Council - Utah, embroidered, JSP, red r/e
- __ Badge Marin Council/Mount Diablo Silverado Council, embroidered, rectangle, silver r/e

- __ Badge Las Vegas "Thunderbirds", embroidered, JSP, purple c/e
- __ Badge "Las Vegas Strip", embroidered, pentagon shape, red c/e note: 6 piece set
- __ Badge Pacific Northwest USA, round, embroidered, black r/e
- __ Badge "USA IST", day set, embroidered, cloud shape, green c/e
- __ Badge "USA IST", day set, embroidered, cloud shape, yellow c/e
- __ Badge "USA IST", day set, embroidered, cloud shape, red c/e, numbered

- __ Badge "USA IST", night set, embroidered, cloud shape, brown c/e
- __ Badge "USA IST", night set, embroidered, cloud shape, black c/e
- __ Badge "USA IST", night set, embroidered, cloud shape, white c/e, numbered



2011 World Jamboree Picture Book



By
David Scott
ISCA #5425L
 dcscott@redhonor.com

WAY BACK WHEN

“Calling All Scouts” Woodrow Wilson and the BSA

Young Tommy Wilson seemed slow. As a ten-year-old boy in 1866, Thomas Woodrow Wilson could not read though he very much wanted to. Growing up in Georgia as the third child of Presbyterian minister Joseph Wilson, the Word of God was revered and read constantly at home. A man

of letters, Reverend Wilson excelled at taking Biblical lessons and applying them to the concerns of the members of his congregation. And if judged by weekly attendance, he was quite effective. But Tommy’s inability to comprehend the written alphabet depressed his father.

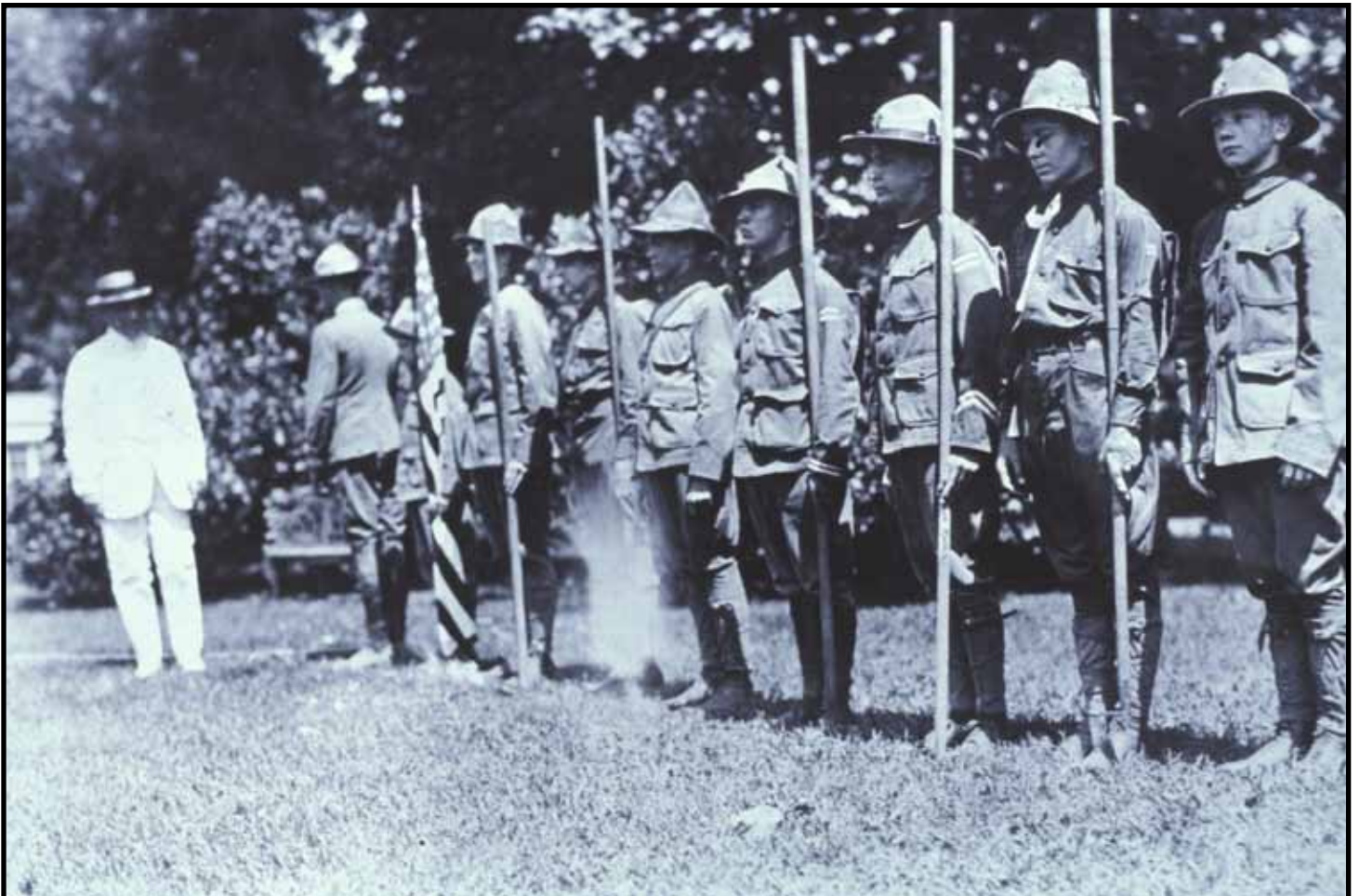
In a later age, clinicians would conclude that Tommy suffered from dyslexia – the inability to interpret letters as whole words and sounds, sometimes popularly referred to as *word blindness*. Reverend Wilson believed his son’s disability could be overcome with diligent work, but not necessarily with reading alone.

So from an early age, the Reverend took his son aside and spent many hours teaching him the fine art of debate and logical thinking – a critical skill that would take the boy far in life and far exceed his father’s expectations. According to historian Jay Winter, “Wilson’s father would give him an idea that the true test was making the world a place where justice, where goodness had a better and bigger place than it had before he came on the scene.”

“When [Tommy] finally did decode the alphabet and enter the priesthood of the literate,” relates biographer H.W. Brands, “he felt an exhilaration that stayed with him his whole life.”

* *

After moving to North Carolina, the seventeen-year-old Tommy enrolled briefly at Davidson University in nearby Wilmington. But family financial difficulties – and perhaps his lack of real interest in Davidson – led him to withdraw, spending his days in Wilmington reading and working on his written composition skills. He later recalled, “I like nothing so well as writing and talking.”





Patrol Reviewed by Pres. Wilson
for
the Photo-play "The Making of a Scout."

During this break from academics the young Wilson's interest in college studies revived. Reverend Wilson, who had attended Princeton College in Princeton, New Jersey, knew the institution's president. When the college chief made a recruiting swing through the Carolinas, Tommy gained admittance and in September 1875 set out on a train heading north.

"[Tommy] helped organize the Liberal Debating Club, whose members held forth on crucial questions of the day," Brands writes. "He competed in public-speaking contests. He joined the staff of the *Princetonian* [newspaper], becoming editor his senior year." Excelling in oratory, Wilson became involved in politics, drafting position papers and debating the critical issues of the time.

He commented to his Princeton classmates: "My judgment of this place is about this, that it is a splendid place for the education of the *mind*, but no sort of place for the education of the *man*." He admired British statesmen and published a well-received essay published in the *International Review* maintaining that the English parliamentary system was superior to the American model because of the problems of U.S. machine politics and corruption.

Upon graduation from Princeton, Wilson entered the University of Virginia to study law but found it "a hard task-master." After eighteen months, pleading ill health, he returned home but heeded his father's advice to "stick to the law and its prospects be they ever so depressing or disgusting." Thereafter he studied law on his own.

For diversion and training, Wilson made extemporaneous addresses "to the empty benches of my father's church...in preparation for the future," read history, and wrote with a passion. He even took voice lessons to strengthen his auditory impact.

"My topics are mostly political," he told a Princeton friend. "And I can sometimes almost see the benches smile at some of my opinions and deliverances."

In the autumn of 1883, Wilson entered a new university in Baltimore funded by entrepreneurial tycoon Johns Hopkins, earning a Ph.D. in "governmental studies past and present." His dissertation, published in 1885 under the title *Congressional Government*, emphasized "constitutional theory at the expense of legislative practice."

Within a few years Wilson was back at Princeton as a professor of political science, progressing over the years to the presidency of the institution. At this time he started using his middle name, Woodrow, rather than Thomas, explaining to the curious that he did so "to honor his mother's special request." Old friends still called him "Tommy," but all others addressed him as the more prepossessing "Woodrow."

By 1910, Wilson's reputation as a first-class educator had caught the attention of the New Jersey Democratic Party. After he won

the governorship, the Democratic political bosses expected him to accommodate their interests. Instead, Wilson pushed through a progressive agenda of reforms including the establishment of a system of state primaries that virtually eliminated the *political party boss* from local politics, revamped the state's public utility systems, and introduced worker's compensation, winning national visibility in the process.

With the 1912 presidential election looming, Wilson was tapped on the forty-third ballot at the Democratic Convention to challenge Republican President William Howard Taft, and the nominee of the Progressive Party, former president Theodore Roosevelt. Ultimately, Roosevelt's inclusion on the ballot split the Republican vote and ensured Woodrow Wilson's election as the 28th president of the United States.

BSA made a formidable impression at Wilson's inauguration in March 1913. Expecting a march by suffragettes, five thousand Boy Scouts toting six-foot-long staves or walking staffs formed a crowd control barrier by interlocking staves in a long line down the procession route. One thousand Scouts surrounded and protected the reviewing stand while another three hundred Scouts performed first aid where necessary.

"The greatest heroes of all were those who volunteered for service, which kept them from seeing the parade," one observer recalled.

* * *

"The first two years of Wilson's first term are one of the most remarkable moments in modern politics," says historian David M. Kennedy. "There's more reform agenda accomplished in that brief moment than in virtually any other two year period in the 20th century."

In June 1916, Wilson signed BSA's federal charter granting it the congressional protection it had sought since April 1910 when original BSA co-incorporator, William D. Boyce, originally filed a national charter request. Now, BSA was the only organization legally authorized to use the word "Scout" and "Scouting."

Wilson created the Federal Reserve System in 1913, lowered tariffs on imported foreign goods – the loss of income led to the passage of the 16th Amendment authorizing a federal income tax – and curtailed child labor with the Keating-Owen Act of 1916.

But his greatest test was the First World War, sparked by the assassination of Archduke Franz Ferdinand, heir to the Austro-Hungarian throne, in Sarajevo in 1915. Under Wilson's leadership, the United States policy was to stay out of the brutal war, which quickly ground down into trench fighting from the North Sea to Switzerland. When the British ocean liner Lusitania was sunk by German torpedoes off the coast of Ireland, many Americans were among the 1,198 dead in the disaster. Wilson knew that the country

eventually would have to enter the war – but when?

For the next two years, German subs attacked vessel after vessel, sinking seven U.S. merchant ships on the high seas. In April 1917, Wilson called for war on Germany and the United States entered the conflict in Europe.

* * *

For the United States to wage war on Germany and her allies, national industrial production had to be converted to a war basis. The President called on BSA, now boasting over 575,000 members, to help in the home-front effort.

Scouts sold Liberty Bonds and War Saving Stamps during five campaigns that contributed nearly \$400 million dollars to the country's war chest. Scouts collected used tires and metal scrap. They inventoried the national supply of black walnut trees whose wood went into airplane propellers and gun stocks. Scouts planted and tended to "victory gardens" that made more food available for America's soldiers known as *doughboys*.

Writing to BSA President Colin H. Livingstone, Wilson declared that "the service rendered by the boys has been greatly appreciated by the whole nation." Ultimately, BSA volunteers sold \$354 million in Liberty Loan bonds (equaling some \$4.3 billion in today's money), distributed \$43 million in War Savings Stamps, rounded up 21 million board feet of black walnut trees and distributed over 30 million pieces of government literature to encourage the population in the war effort.

In appreciation, Wilson issued a *Proclamation* in May 1919 that recognized the national wartime service by legions of Scouts. On the basis of that, BSA issued certificates attesting to the effort of individual Scouts or Scouters "having manifested a desire to have a part in the nationwide effort pursuant to *Proclamation by the President of the United States* to strengthen and extend the influence of the Boy Scouts of America in carrying out its program with the boyhood of our country." Each recipient was enrolled as an "Associate member of the National Council, Boy Scouts of America" in "Character Building", "Citizenship Training" and "Americanization" for the year ending June 30, 1920.

By the time the war came to an end in November 1918, the Boy Scouts of America had become a familiar and appreciated player on the national stage, recognized for its ability to mobilize and perform national service.

Copyright 2012 by David C. Scott. Text is adapted from his forthcoming book *My Fellow Scouts: BSA and the American Presidency*. Dave also is the author of the nationally award-winning book, *The Scouting Party* (Red Honor Press, 2010) and *We Are Americans, We Are Scouts* (Red Honor Press, 2008). Currently he is authoring the official centennial anniversary book for the Circle Ten Council in Dallas, Texas. Dave can be contacted at dcscott@redhonor.com.

On June 15, 1916, President Wilson signed a bill, passed with unanimous consent in both houses of Congress, granting federal incorporation to the Boy Scouts of America.

"The Boy Scouts have not only demonstrated their worth to the nation, but have also materially contributed to a deeper appreciation by the American people of the higher conception of patriotism and good citizenship. Every nation depends for its future upon the proper training and development of its youth. The American boy must have the best training and discipline our great democracy can provide if America is to maintain her ideals, her standards, and her influence in the world. Anything that is done to increase the effectiveness of the Boy Scouts of America will be a genuine contribution to the welfare of the nation."

Source: <http://www.scouting.org/About/FactSheets/presidents.aspx>



Looking For Red & Whites

A 1-line RWS?? Yes Indeed!

By
Blake Keasey
ISCA 0084L
cblakek@yahoo.com

If you have seen the wall posters at TORs, then you know that this well known New York collector has been searching for STATEN ISLAND, N. Y. (gb) RWS for well over a decade. So far it is the only 1-line full-sized RWS to ever turn up. Thanks

to 2 very observant collectors, one on each coast, variations continue to turn up. A pattern has emerged, in terms of tag differences, that justifies some new terms. In the future, those whose tags go to the border will be referred to as TTB and those in which the tags go between the letters will be designated as TBL. The HIAWATHALAND/COUNCIL (TTB) RWS is an example of an RWS with the tags going to the border. It appears that the TTB are generally less common and probably earlier issues than the TBL.

LAST CALL!

In the December 2011 issue, I sought assistance in confirming the existence of 2 dubious RWS – Andrew Jackson/Council (121/63) and East Boroughs Council/Penna. (104/). If I don't get scans over the next couple months, then both will be deleted from various listings. So if you have either one, then please send a scan.

New 1/2-strips include a very rare NORTHERN KENTUCKY 1/2GB. As this small council merged in 1952 no red and whites would be expected, but a khaki and red is known in which Kentucky is abbreviated. The NECK DISTRICT 1/2RW is the 18th 1/2RW District patch to surface. If anyone knows the location of that district, then please pass it along.

That above mentioned New York collector also provided photographic evidence that Sea Scouts attending the 1950 National Jamboree were wearing NEW YORK CITY/QUEENS BWS. This confirms his long-held belief that all 5 New York City boroughs had issued Sea Scout patches.

New military bases (mbs) continue to surface. The most unusual one comes from England – MOLESWORTH A.F.B. 1/2RW. Although 3 others have come from England, this is the first one to carry the AFB designation. Three odd color Army bases have been reported. FT. RINGGOLD 1/2KR began during the war with Mexico, was active during the Civil War, the war with Cuba, and both World Wars. It was declared as surplus in 1944 and decommissioned. From Virginia, we have both FORT EUSTIS 1/2BY and FORT EUSTIS 1/2KR (gb). I was initially suspicious of ARSENAL 1/2RW, but could not find any towns by that name. In my memory, there was a town in CO., but it turned out to be a soccer team. As the father of the source of this patch worked at the Pine Bluff Arsenal in AK, so it appears to be a genuine mbs.

The only new USA/ABR patch is EAST PAKISTAN 1/2RW. Previously a Dacca/Pakistan RWS has been reported and, from the other side of India, a W. Pak 1/4RW has been reported.

In terms of unusual town names, we have Freewood Acres (probably not anymore), Fish Haven, De Land, Rule, and Security. But the most unusual one is Red Sea. Could not find a town with that name and the church by that name did not return a telephone call. There was some initial excitement that it was a new USA/ABR, but that's doubtful. So can anyone help us out?

Contributors for this issue include Alan Beck, Gene Berman, Bob & Vicki Burt, Charles Childers, Karen Fishell, Robert Frizell, Dan Graham, Ray Grant, Bill Loeble, Rick Obermeyer, John Taylor, Larry Trook, and Stephen Wien.



Blue Plastic (Type H) Merit Badges

by FRED DUERSCH, JR. ISCA #3012L

In response to a number of requests from serious merit badge collectors, I have prepared this article to try and identify the blue plastic merit badges issued by the BSA. Genuine blue plastic merit badges have a definite blue color tint that is obvious when compared to the normal clear plastic. Generally speaking, blue plastic merit badges appeared early on when plastic back merit badges were introduced in 1972 and continued through the 1970's and perhaps into the early 1980's. The exact time line is difficult to verify. Some merit badges (Automotive Safety, Beekeeping, Canoeing, Dairying, Drafting, Etc.) have a blue embroidered background on the obverse that can make it difficult to verify that the merit badge is genuine blue plastic. However, even these merit badges can be shown to be genuine blue plastic. There are some merit badges that I refer to as "poor man" blue plastic because the typical blue color is only partially visible. Following is a list of genuine blue plastic merit badges based on my personal collection. The "poor man" varieties are identified with (PM) in parenthesis after the merit badge. Cotton Farming and Fruit & Nut Culture only exist in blue plastic. I welcome your suggestions and comments if you have genuine blue plastic merit badges that are not on my list.

Agriculture	Emergency Preparedness	Plant Science (PM)
American Business	Engineering	Plumbing
American Heritage	Environmental Science	Pottery
Animal Industry	Farm Arrangements/Farm & Ranch Management	Poultry Keeping
Animal Science	Farm Mechanics (no roll bar)	Printing
Archery	Farm Records	Public Health
Architecture	Fingerprinting	Public Speaking
Art	Firemanship	Pulp & Paper
Astronomy	First Aid	Rabbit Raising
Athletics	First Aid to Animals (green)	Radio
Atomic Energy	Fish & Wildlife Management	Railroading
Automotive Safety/Traffic Safety	Fishing	Reading
Aviation (vertical twill)	Forage Crops	Reptile Study
Basketry	Forestry	Rifle & Shotgun Shooting
Beef Production	Fruit & Nut Growing	Rowing
Beekeeping	Gardening	Safety
Bird Study	Genealogy	Salesmanship
Bookbinding	General Science	Scholarship
Botany (PM)	Geology	Sculpture
Bugling	Hiking	Sheep Farming
Camping (green)	Hog Production	Signaling
Camping (silver)	Home Repairs	Skating
Canoeing	Horsemanship	Skiing (brown skis)
Chemistry (PM)	Indian Lore	Small Boat Sailing
Citizenship in the Community	Insect Life	Small Grains
Citizenship in the Nation (B/W/R)	Journalism (J key)	Soil & Water Conservation
Citizenship in the Nation (R/W/B)	Landscape Architecture	Space Exploration
Citizenship in the World	Law (PM)	Sports
Coin Collecting (black letters)	Leatherwork	Stamp Collecting
Communications	Lifesaving	Surveying
Computers (personal computer)	Machinery	Swimming
Computers (punch card)	Mammals/Mammal Study	Textiles
Conservation of Natural Resources (silver)	Masonry	Theater (PM)
Consumer Buying (PM)	Motorboating	Truck Transportation
Cooking (green)	Music	Veterinary Science (PM)
Cooking (silver)	Nature (green)	Water Skiing
Corn Farming	Nature (silver)	Weather
Cotton Farming	Oceanography	Wilderness Survival
Cycling (bicycle)	Orienteering	Wood Carving
Cycling (triangle) (PM)	Painting	Woodwork (PM)
Dairying	Personal Finances (PM)	
Dentistry	Personal Fitness	
Dog Care	Personal Management	
Drafting	Pets	
Electricity	Photography	
Electronics	Pigeon Raising	
	Pioneering	



By
Dave Minnihan
ISCA # 0018L
dave.minnihan@gmail.com

OA News

Mega Council Announced



By
Bruce Shelley
ISCA # 0054L
shelleyotte@comcast.net

We picked up several interesting stories at the Dallas TOR and ISCA convention in January, including big news out of Michigan that has implications for the rest of the country. Roy More tells us that the lower peninsula of the state is being reorganized into one large super council. The existing councils in

Another surprise at Dallas was an appearance of heretofore unknown badge that may be the first issue from Un A Li'Yi 236. This interesting badge was a hollow felt circle printed in red, designed for wear around a Camp Ho-Non-Wa badge. It depicted several segments, one of which said "OA" and

this is an unknown badge from the lodge. The possibility exists that this was a prototype for segments, some of which were never issued. Right now it is just a very intriguing mystery, especially for lodge members.

this area will be merged to form four field councils. Each of these will have one OA lodge. Most of the existing councils in the lower part of the state will be merging. One exemption from that is new lodge Noquet 29, which we understand will not be forced to merge after one year of existence.

Ag-Im 156 in the Upper Peninsula will be going away with its council also, but it is not clear right now where. It may go as a whole north or south, or split in two with parts going each way.

We understand this is a push by the BSA to further cut costs and streamline operations. Instead of 10 councils paying for audits each year, for example, there will be one audit. The plan is to centralize administration while decentralizing and increasing local ownership. The council is looking to double the number of Unit Serving Executives in the next six months.

A move to one OA lodge for the entire lower part of the state was considered but it was pointed out that, among other values to Scouting, the OA is an important training ground for future BSA professionals (Roy told us that 75% of current professionals were in the OA as Scouts). For now, multiple OA lodges are expected to exist in the state for at least the near term.

The implication here is that similar consolidation may be in store for more states. We asked Roy if he thought the OA map could look amazingly different by the 100th anniversary in 2015, and he tells us that is unlikely. If Michigan is an experiment the BSA may assess how it goes before expanding the plan elsewhere.

The most interesting thing we saw at Dallas was a small notebook and some cards that had been turned in to Coronado Area Council office in Salina, Kansas. This was the complete history of the Tribe of the Red Arrow, a camp honor society at Brown Memorial Scout Camp. Inside was a description of the society's ceremonies, honors, insignia, and a complete roster of members during its existence from 1944 to the early 1950s when the council organized Kidi Kidish 434 of the OA.

Members wore lanyards suspending a red arrow (not sure what the arrows were made of). Braves wore black lanyards, Warriors wore blue, Chieftains wore yellow, Chiefs wore white, and ex-Chiefs wore silver. Jim Waters brought the notebook and candidate cards to show and he says the council has only a few of the lanyards.

This material was of particular interest to Roy More because his father had told him he was a member of the Red Arrow as a Scout in Kansas. Looking at the list of charter members in the notebook we saw listed Keith More, Roy's father.

At Dallas we also attended a discussion hosted by Roy More on the future of the Blue Book, which his company, TSPA, now manages. He began by reviewing the history of OA catalogs dating back to the OA Illustrated Patch Guides and Dave Leubitz's Blue Book, through the new Blue Book from 1996 to 2006. We then discussed the problems facing any OA catalog. These included the difficulty for regional and area editors to keep up with new issues, decimal number issues, new research suggesting errors in the current catalog, and the fact that history is being lost every day.

The new Blue Book supported by TSPA is online – OABlueBook.com. Registered members are entering thousands of new issues and images each year, plus historical information (when issued, why issued, how many, etc.). People can point out errors or flag problems. While printing the entire catalog is not practical as business, it will be possible for anyone to download and/or print by lodge, section state from archived PDF files.

There is strong sentiment for a complete renumbering of the catalog (Blue Book 2.0). Interested parties are discussing how best to represent a new numbering order (show both old and new numbers). There is also sentiment to expand the listings for more detail on neckerchiefs and perhaps other lodge memorabilia, but much less detail on varieties. For example, if a variety requires that two patches be held next to each other to distinguish that may change to one issue with many varieties in existence (MVE).

Going forward, Roy is considering ways to make BB2.0 more accessible and flexible. He has commitments from editors for only about 1/3 of the lodges and needs more capable volunteers. He is working on a process for re-numbering and one for marking for deletion. They are considering a multi-stage approval process – lodge editor, state editor, area/regional editor, national editor. They are considering an appeal process for those who disagree with a listing.

Overall, the new Blue Book is hoped to be a truly living record that can keep up with the floods of new issues while remaining easy to use by all interested parties.

Fighting the trend for fewer OA lodges around the country comes news from Long Beach Area Council that they will be forming a new lodge, the first in maybe 50 years not involving mergers. Previously the council relied on its camp honor society, the Tribe of Tahquitz to

provide service. A new professional wants OA, however. We hear the lodge name is to be Tongva, the native tribe from the area. We understand the Tribe of Tahquitz will carry on as well.

In late November, a chenille badge described to be from Wigwam Tribe, a pre-OA camp honor society based at Camp Wildwood of Fayette, PA, sold on eBay for \$1,260. In the fine print the seller commented that together with the badge the buyer would receive a 29 page report on the camp that listed (society?) members and the (society's?) history, plus an old PA state strip. The clear images included by the seller showed on the reverse of the badge a Type 6a label from Standard Pennant Company, dating to the middle 1940s.

When we checked a website devoted to Scout Honor Societies we found the exact badge shown as being from Wigwam Lodge, created in the 1920's at Camp Wildwood of Westmoreland-Fayette Council. The notes on this page state that Camp Wildwood closed about 1940 and that Wigwam members were allowed to join the already existing Order of the Arrow lodge Wagion 6 at Camp Wesco also in the council.

Although the badge is significant and appeared to be in excellent condition, the documentation had to factor into any potential bidder's valuation. Dave Eby's notes about the Wigwam Lodge consist of three sentences. A history of the lodge 29 pages long would be of tremendous value to any historian of the council or of these pre-OA societies in general. We will try to track down the purchaser and to learn what the history covers.

The Scout Honor Society website is here:

Usscouts.org/honorsociety/honorscout.asp

This past quarter two flaps originally part of the superb Dave Thomas first flap collection were back on the market. Both failed to sell on eBay when no bid matched the minimum asked, even though both were offered for about 10-15 percent less than they were priced for the sale of the collection. The two flaps were an Ini-To 324 F1 offered at \$424 and a Nentego 20 F1 offered at \$451.

In November a nice Explorer shirt and trousers lot sold on eBay for \$441. The shirt included some Explorer position and rank badges, khaki & red strips from Georgetown, Texas, and an Eagle medal, but the real value was probably in an early felt arrowhead badge from Tonkawa 99. We could not tell from the image which of the early felts the badge was.

Last year Ajapeu 33 created two flaps as fund raisers for breast cancer awareness, in support of one of their members whose mother was struck by this terrible disease. The idea caught on and several lodges followed with similar flaps, usually with pink in the design somewhere. These were popular traders over Patch-L as so many families has been touched by this scourge. We have heard, however, that the BSA has told OA lodges (and maybe councils) to stop creating patches to raise funds for organizations and causes outside of the BSA. A few patches already ordered will be okay but no more orders are to be placed.

We have also heard of a controversy related to the first flap from new lodge Lowanne Nimat 219 from New York. This is the lodge that issued two different flaps for the 2010 National Jamboree with the abdominal snowman creature as their totem. Then they changed their totem and issued a restricted charter member flap several months later. We hear they want their restricted flap to be their first flap. Collectors seem pretty clear that chronology determines what the first flap is. In cases where multiple flaps are issued at once,

then there is leeway in deciding what is considered the first, but this case seems clear.

Related to this story, Mike Conkey sent us information on Lowanne Nimat badges from a lodge member. The document says the darker border 2010 Jamboree flap (S1) was the trader issued in June with 420 made. The S2 with lighter blue border was the contingent flap also issued in June with 330 made. How the decision was made to call one the S1 was not mentioned.

Rick Obermeyer reported in October that the Tipisa 326 2012 jacket patch has 24 colors, a new record for him after designing over 400 badges. Keeping with the theme the Renaissance of Brotherhood, the badge takes Botticelli's painting the "Birth of (naked) Venus" and transforms into the "Birth of (uniformed) Arrowman." Their next event badge will feature Michelangelo's "God Creating Adam."

A Caddo 149 F1 FF was offered on eBay in early December with a certificate of authenticity noting it had been in Dwight Bischel's collection. The badge drew no bid at its minimum of \$135, plus shipping. After the auction ended we noted two other copies of this flap for sale in eBay stores, one at \$130 and one at \$169. Another offered for \$100 with free shipping back in November also did not sell.

A rare trio of NOAC 1967 staff armbands were offered on eBay in October but drew no bid at the minimum of \$270. The armbands were for the OA Newsroom, Arrowaid, and OA Showman. In late November they were available for \$250 in an eBay store. We also saw the OA Newsroom armband by itself in another store for \$125.

An authentic Blue Heron 349 S3 purple water flap sold on eBay in January for \$293. This is one of those flaps that becomes a legend, or at least very desirable at home or in its area. The flaps before and after this one had a light blue shadow on the water below the standing heron, the lodge's totem. In 1960 a new loom run arrived with a purple shadow on the water. Being distinct and in short supply, it became highly desired by collectors and it is more valuable today than the lodge's first flap.

At some later date a fake of the S3 appeared and instantly became a source of confusion and irritation. The real flap has a white thread back and normal rolled edge. The fake has a multi-colored back and flat rolled edge.

Now here's something you don't hear every day. Steve Heron sent us images of four official flaps that his lodge, Menawngihella 500, sanctioned for his wedding. He designed the flaps and the lodge approved them. The designs feature two flying heron birds and the initials SHD, for Steve and Dawn Heron. Also featured are lodge's beaver totem and the three teepees by the lake shown on all of their flaps.

The multi-colored flap was a gift to the lodge as a fundraiser for them with 75 made. The green flap was given to all friends of the bride and groom with 160 made. The brown flap was given to family members with 90 made. The purple flap was given to the bridal party (purple was the wedding color) and only 25 were made. He tells us the flap set was his wife's idea and he is thankful the lodge agreed.

Rick Bedsworth sent us digital copies of a flyer and donation form for the ACES trade-o-ree to be held in Las Vegas and sponsored by the Las Vegas International Scouting Museum September 28th and 29th. There is a special patch available for those donating memorabilia to their auction. For copies of the flyers write to kwtrdr@gmail.com.

A NOAC 2004 flap from Black Eagle 482 sold on eBay in early January for \$81. The remarkable thing about this flap is that it is made of cork. From the images we could find it appeared to have a rolled edge and be embroidered. To our knowledge this is the first OA insignia made from cork. We missed it 8 years ago. Cork production is an important industry in Portugal and Spain, mainly for the wine trade, and we guess that was the source of the cork material.

Tracy Mesler reported to Patch-L about NOAC 2012 issues to come from Wichita 35. There will be a fundraiser two-piece set and CSP. For delegates there will be a two-piece set, jacket patch, neckerchief, CSP, and NC slide.

Scott Holm reported Tah-Heetch 195 is producing the following for NOAC: trader flap with black border (350), contingent flap with silver mylar border (150 numbered), and gold border donor flap (100 numbered). In addition his lodge is hosting the W3S conclave in April at the Fresno Chaffee Zoo. They are making four special flaps featuring animals from the zoo: King Vultures, Gaboon Vipers, Prairie Falcons, and Orangutans.

As an experiment we took part in a 10-10 OA flap trade at the end of the year offered by Mike Conkey of Tahosa 383 via Patch-L. It was fun and was an interesting way to switch around some trading duplicates. The ten flaps we got in exchange were uniform flaps from lodges 101, 209 and 549; two W6-E flaps from 66, BSA 100th flaps from 16 and 193, a conclave flap from 331, and two of the animal flaps from 378 (Gila monster and wild pig). We spoke to one trader in Dallas who said he had sent in 80 flaps to trade.

John Kennedy sent us an Owasippe 7 NOAC 2012 flap that was sold at their lodge banquet. Unfortunately, the lodge name was misspelled on the flap as "Owasipee," probably creating a need for all of you name variation collectors out there. And that was not all. They also added this misspelling -- "NAOC." Over the last decade this lodge has had trouble getting patches delivered in time for events. It looks like they dropped quality control a few notches trying to get a flap available ahead of time. John tells us a new flap has been ordered and is supposed to be available in time.

Bill Leavitt sent us info on eleven new flaps from Pamola 211. There are three different Indian Summer flaps (200 red border traders, 75 green border contingent flaps, and 60 gold border staff flaps). The rest were 70th anniversary flaps including several that were individually numbered.

Brad Estabrook writes that Pachachaug 525 reordered their Trained Elangomat and Service patches. The designs are the same as in the past but there are some minor color changes and the thunderbirds are now 3-D. 125 were made of each and they are earned each time a member fills a committee position. The lodge will be issuing something for NOAC and may have an odd-shape for their 55th anniversary. He also says there will be a patch for NOAC Housing Staff but hasn't heard if there will be one for Transportation Staff.

The Gila 378 flap showing the javelina is the last of the 12 flap series featuring Southwestern wildlife to mirror the Chinese zodiac, in this case the Year of the Pig. The lodge issued one of these zodiac flaps at each of four events for three years. Dave Panko tells us that now people are searching for the earlier flaps. They are very pleased how the set turned out being both educational and fun.

Quick comments:

Bill Biggerstaff tells us that Itipabishe Iti Hollo 188 will be putting its totem, the beaver, on one of its badges for the first time later this year.

The new Mikanakawa 101 S54 includes a partial URL for the lodge website in its design: MIKI.ORG.

A two-piece set from Mikano 231 celebrates the lodge being named a quality lodge for three straight years: 2008-2010.

The Gila 378 S11 flap was given to those donating \$50 worth of memorabilia to their TOR auction.

eBay seller discountbar has been reported selling fakes but showing images of the real patches stolen from oaimages.com.

In late January there were 95,406 Boy Scout items for sale on eBay, of which 30,568 were auction items.

The following badges did not sell on e-Bay when there were no bids at the minimum (NB).

51a1 Osa w/1930 Camp Irondale felt \$7,500
73s1 light use? \$602 FF (\$1140)
89f1 Kep \$777 FF (\$1260)
94x1 0n nc \$19,500
108j Wakosha Dancers \$14,500
123f1 FF \$300 glue on back (\$459)
219f1 Cal FF \$6,000 (\$5750)
227r1 Wetassa \$8,500
228a1 WAB \$22,500
296s1 FF \$755 (\$840)
345f1 Koi FF \$1204 (\$1849)
471s1 \$260 FF (S1a \$484)
538f1 FF \$10,500 (\$10,500)

Here is a list OA badges of note that changed hands recently in Internet auctions or in private sales for which we have certain information. Figures in parentheses are the prices asked for the Dave Thomas first flap (FF) collection.

26x2 felt \$736
89f1 Key used \$381 FF (\$1260)
103s9 1990 OA 75th Ann \$330
113f1 \$285 FF (\$650)
119x1 WAB worn \$62
154f1b \$1613 (F1a \$2850)
249a1 WAB sateen and 249c \$886
265f3 on neckerchief \$1000
282s1a Ach with tail \$35 FF (\$97)
310f1b \$415 (F1a \$1700)
320s1 Osk \$94 FF (\$187)
437f1 worn \$800 FF (\$3500)
459f1 \$250 FF (\$382)
517f1 \$210 FF (\$249)

Please drop us a note with news or stories that you think would be of interest to other collectors. If you have information from your Lodge or Section to share, send an e-mail, photocopies (with descriptions, catalog numbers, and preferably in color), or scan to either of us. You reach Dave at dave.minnihan@gmail.com or Bruce at shelleyotte@comcast.net For publication we require color TIFF images of new badges scanned at 300 dots per inch (DPI), reduced 50%. We will trade for new issues if you wish.

Contributors: Bob Walton, Dave Panko, Bill Leavitt, Brad Estabrook, Roy More, Rick Obermeyer, John Kennedy, Jim Waters, Dustin Ferris, Mike Conkey, Michael Soto, and Scott Wheeler.

New Issues

7s43 Blk C Gry Blk Dgy Fdl; NOAC2012;
 "Owasipee" and "NAOC"
 29s1 Red R Wht Red Blk Fdl; FF
 29s2 Bmy R Lbr Dyl BSA: set w/X1
 29x1 Bmy R Lbr Dyl Tan Fdl; NOAC2012
 66f13 Smy R Blk Smy Smy Fdl; W6-E
 66f14 Gmy R Blk Smy Smy Fdl; W6-E
 101s54 Red R Lgy Red Yel fdl; "MIKI.ORG"
 211s46 Red R Tan Blk Black dash Ord;
 "70th anniversary 1941-2011"
 211s47 Red R Tan Blk Red dash BRO
 "70th anniversary 1941-2011"
 211s48 Red R Tan Blk Yellow dash VIG
 "70th anniversary 1941-2011"
 211s49 Red R Tan Blk Black dash ORD
 Individually numbered ghosted 0-100
 "70th anniversary 1941-2011"
 211s50 Red R Tan Blk Red dash BRO
 Individually numbered ghosted 0-100
 "70th anniversary 1941-2011"
 211s51 Red R Tan Blk Yellow dash VIG
 Individually numbered ghosted 0-100
 "70th anniversary 1941-2011"

211s52 Red R Tan Blk
 211 and WWW under deer and arrow
 211s53 Red R Tan Blk
 211 and WWW under deer and arrow
 Individually numbered ghosted 0-15 and 27
 211s54 Red R Tan Blk Yel Fdl;
 Trader "Indian Summer 2011"
 211s55 Grn R Tan Blk Yel Fdl
 Contingent "Indian Summer 2011"
 211s56 Gld R Tan Blk Yel Fdl;
 Staff "Indian Summer 2011"
 231s66 Smy C Yel Red Red Fdl; "2011"
 231x34 Blk C MC Red Red Fdl;
 "Threepeat Quality Lodge 2008 2009 2010"
 313s44 Red R MC Org Dbr Fdl; NOAC2012;
 Set w/X
 313x26 Red R MC Red Red Fdl; NOAC2012;
 "Home of P.T.Barnum"
 317s43 Pnk R Pnk Pnk Pnk Fdl;
 Breast cancer awareness fundraiser
 317j6 Dyl R Grn Wht Gry Fdl; 200mm RND;
 "Ceremonies Team"
 326j11 Drd R MC Wht Red Fdl; "2011-2012"
 "A Renaissance of Brotherhood"
 331s76 Gmy R Blk Smy Smy Fdl; "1946-2011"
 378s77 Gmy R MC Blk Lbl Fdl; TOR donation flap
 378s78 Blk R MC Wht Blk Fdl; Javelina
 488s71 Gmy R MC Blk Yel Fdl; 60th Ann
 525x36 Red C Wht Blk Red Fdl "Lodge Service"
 Thunderbird is 3-D
 525x37 Yel R M/C Red Red Fdl "Trained Elangomat"
 Thunderbird is 3-D
 531s86 Smy R Pur Smy Grn Fdl
 531s87 Smy R Pur Smy Grn Fdl;
 "W3S Conclave Host 2011"
 550s47 Org R MC MC ___; "SHD"
 550s48 Grn R Lgr MC ___; "SHD"
 550s49 Brn R Lbr MC ___; "SHD"
 550s50 Pur R Lpr MC ___; "SHD"



029s1



066s14



101s54



378s77



326j11



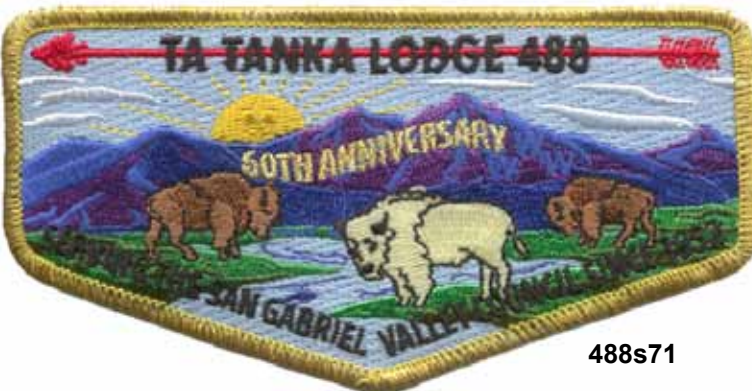
525x36



378s78



550s47



488s71



525s37



317s43

Collecting Camp Patches

Camp Fellsland



By
Bob Sherman
ISCA 0490
footdoc7@optonline.net

Featured this issue is **CAMP FELLSLAND** from Medford Council (1924-32) Fellsland Council (1932-59) and Minuteman Council (1959-63) in MA. At the Camp Carpenter TOR this past October that, by the way, was terrific, I was able to acquire two older issues from this camp to go with the 3 I had. The newbies are a large black 150 mm tall by 115 mm wide felt "F" and a 30th anniversary round felt dated 1954 which means the camp opened in 1924 during the Medford Council era. The other issues from this camp in my collection are two felt teepees and a woven rectangle.

Old felt letters like the early "F" from Fellsland are hard to positively identify without good provenance. Fortunately, there was excellent proof provided by Richard Mori, a really nice fellow from whom I obtained the patches. They were displayed in an old frame with advancement cards, a Winchester, MA town strip, merit badges and the 30th anniversary felt Fellsland patch described above. If anyone would like to see the frame, please send me an email.

Chris Jensen of SC sent me photocopies of 1954 & 55 **PANTHER LANDING SCOUT RESERVATION** booklets published by Old Dominion Council. The season for 1954 was one week long (June 27th-July 3rd) while the 1955 season ran for 6 weeks. As readers of this column know, Panther Landing was a SSC (Segregated Scout Camp). Two interesting points to note from the booklets was NO mention about the camp being restricted to Scouts of any race. The other point of interest was that the only known



Camp Fellsland

patch from Panther Landing says Tidewater Council while the booklet was from Old Dominion. Chris and I surmised that both councils probably shared this camp although it was owned by Tidewater Council.

Chris also sent a copy of a very old camp manual and song book from **CAMP RO-FRE-LA** from Columbus Council (1910-30) in Ohio (there also was a council by that name from Georgia (1919-23) but this booklet says it was from Ohio. The name of the camp derives from Rose and Fred Lazarus, the parents of Jeffrey Lazarus who donated the camp and its equipment. This camp later became **CAMP LAZARUS** owned by Central Ohio Council, the

council that succeeded Columbus Council.

In this booklet were the requirements for admission to the **MYSTIC ORDER OF THE WHITE SWASTIKA**, Camp Ro-Fre-La's Honor Fraternity. The requirements included Mental, Physical, Moral and Social Tests. The booklet also had the requirements for the **GOOD INDIAN** Award that was the highest camp honor for members of the Mystic Order of the White Swastika.

Since the subject of the White Swastika is on the table, I have an illustration of a White Swastika patch from **CAMP RUSSELL** from General Herkimer Council in NY. This organization made up of honor campers



replaced the Order of Ka Mar Go at Camp Russell. It was based upon the traditions of the American Indian, as the swastika was an ancient Indian symbol. However, in the 1930's, they changed the name of their honor society back to Ka Mar Go as the swastika had become the symbol of Nazi Germany.

For the benefit of all you music lovers in ISCA-Land, I would like to print the words to the beloved song "NELLIE", one of the camp songs from Chris Jensen's Ro-Fre-La camp booklet that may bring some of you sensitive readers to tears because of it's beautiful and tender lyrics. I am reasonably certain that it was not inspired by our friend Nelson Clements of PA.

Nellie ate some oysters and Nellie
ate some ham,
Nellie ate some marmalade, then
Nellie ate some jam,

Nellie ate some Johnnie Cake, Nellie drank some beer,
Then Nellie wondered why she felt so queer.

O-up came the oysters, o-up came the ham,
O-up came the marmalade, o-up came the jam,
O-up came the Johnny Cake, splash went the beer,
Then Nellie knew why she felt so queer.

They don't write songs like that any more.

Mike Heitke of WI, the Council Historian for Glacier's Edge Council, corrected one of my previous articles where I showed what I thought was a patch from **CAMP WALLA-GA-ZU**. It turns out that this was NOT a summer camp but rather, a District weekend camping program held at **CAMP ROTARY** in October, 1944. The title of the program Walla-Ga-Zu means "to know how." Scouts had the opportunity to pass their field tests for 2nd & 1st Class and to use a newly constructed obstacle course. The OA had a tap out at the Saturday night campfire.

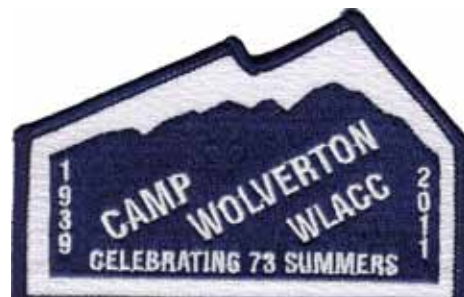
Frank Glick of CA sent some sad news for everyone who loves Scout camps. After 73 Summers of operation, the National

Park Service (NPS) has closed **CAMP WOLVERTON** in Sequoia National Park. Camp Wolverton, at an elevation of 7200 feet was used 3 months each year as a traditional Boy Scout Summer camp and High Adventure Base camp for hiking, fishing, and camping in the High Sierra Mountains of California. Crescent Bay Area Council started the camp in 1939 and Great Western Council and then Western Los Angeles County Council later ran it. The Council did their best to convince the NPS to allow the Scouts to use the camp but they insisted the Scouts leave and remove all buildings, tables, tent platforms etc. Frank, who was on the Wolverton Staff from 1972-75 and was Campmaster from 1986 thru 2011 told me that Alden Barber was Camp Director of the camp in the early 1940's and later became National Chief Scout Executive. In interviews, Barber said that many of the ideas for Scouting's High Adventure programs came from Camp Wolverton. Frank sent scans of the first and last patches issued by this great camp.

Ed Evans of WV send a copy of an old penny post card indicating **CAMP WILDERNESS** from Appalachian Council had one week of their 3 week camp season being reserved for a Negro session. The post card also had a place to reserve space at their other camp **BLUESTONE RESERVATION**.



First Camp Wolverton Patch



Last Camp Wolverton Patch

I would like to conclude with some Mystery Patches that need ID's from sharp-eyed readers. MP-1 is a 1929 round felt with "CA". MP-2 is a felt "W" or possibly an "M", MP-3 is a round felt "CN", MP-4 is a round felt "KO", MP-5 is a ship's wheel with stars from Joe Klos that he sent several years ago and MP-6 is a round felt teepee,

Mystery Patches



12-1-MP-1



12-1-MP-2



12-1-MP-3



12-1-MP-4



12-1-MP-5



12-1-MP-6



By
Steve Austin ISCA
0080
 saustin@twcny.rr.com

CSP CORNER

New Regular Issue CSPs

There are a slew of new regular issue CSPs coming out this Scouting season as many of the councils that issued 100th anniversary CSPs are changing their designs now that they have sold out of those and because we are now in year 101!

Getting psyched for the NOAC 2012 TOR – hope to see many of you there. Jim, Blake, and I are still finalizing plans for the next edition of the CSI Guide and plan to have something available at the pre-NOAC.

Council	Issue #	Border	Sky/Bkg	FDL	SE	BSA	Name	Issue Description	Qty
Allegheny Highlands	SA-96	BLK	R/W/B	YEL & WHT			GRY	"2011 Friends of Scouting"	
Allegheny Highlands	S-102	RED	BLU	BLK			YEL	Regular wear issue	
Baltimore Area	SA-168	YEL	BLU	BLU & GRN			YEL	"Broad Creek Memorial Scout Reservation"	1000
Baltimore Area	SA-169	YEL	BLU	WHT			YEL	"FOS 2012, Prepared. For Life"	3750
Baltimore Area	FA-170	BLK	BLK	WHT			GRN	"Fall 2011, N6-220-11-1, Wood Badge"	320
Baltimore Area	FA-171	BLK	BLK	WHT			GRN	"Fall 2011, N6-220-11-1, Wood Badge", staff issue, glows in the dark	100
Baltimore Area	FA-172	BLK	GRN	GRN			GRN	"Fall 2011, N6-220-11-1, Wood Badge", course scoutmaster issue	21
Baltimore Area	SA-173	BLK	RED	BLU		WHT	WHT	"2011 Kernel's Challenge, Prepared. For Life"	650
Black Hills Area	S-41	BLK	PEACH/LAV	BLK			BLK	"Est. 30", Regular wear issue	
Blue Mountain	SA-17	BLU	LT BLU			BLU	BLU	"Friend of Scouting, Clean, MX"	
Blue Ridge Mountains	SA-60	GRN	GRN TARTAN	YEL		YEL	YEL	"Gilwell Park", woodbadge issue	250
Bucks County	SA-107	BLK	BLU		YEL		LT GRN	"Ockanickon 70th Anniversary"	
Bucks County	T-108	BLU	LT BLU	GRN			BLU	Regular wear issue	
Bucks County	T-109	GRN	LT BLU	GRN			BLU	Regular wear issue	
Buffalo Trail	SA-26:1	BLK	LT BLU	RED			RED	"60th Anniversary, 1947 2007"	
Buffalo Trail	S-54	RED	LT BLU	LT BLU			LT BLU	"West Texas Treasures"	
Burlington County	SA-61:1	RED c/e	LT BLU	RED			BLK	"2009 High Adventure"	
Burlington County	FA-74	BRZ/M	GRN	WHT			GLD	"Friends of Scouting, Trustworthy, BSA 2010, 85 Years of BCC - 100 Years of BSA", \$500 DN	
Burlington County	SA-81	LAV c/e	YEL				LAV	"Philmont Scout Ranch 2011"	
Cal Inland Empire	SA-178	SIL/M	LT BLU	LT BLU			BLK	"Friends of Scouting 2011", A Scout is Brave"	
Cal Inland Empire	SA-179	GLD/M	LT BLU	LT BLU			BLK	"Friends of Scouting 2011", A Scout is Brave"	
Cal Inland Empire	SA-180	BLU	LT BLU	LT BLU			BLK	"Friends of Scouting 2011", A Scout is Brave"	
Capitol Area	SA-49	BLK	RED	WHT			WHT	"1912 2012, 100", council anniversary	
Cascade Pacific	SA-120	RED	YEL	BLK			BLK	"2011, Words to Live By, Friends of Scouting"	
Cascade Pacific	SA-121	YEL	RED	BLK			WHT	"2011, Words to Live By, Friends of Scouting"	
Cascade Pacific	SA-122	BLK	BLU	WHT			YEL	"2011, Eagle Scout Sponsor"	100
Cascade Pacific	SA-123	RED	BLU	WHT			YEL	"2011, Eagle Scout Celebration"	200
Cascade Pacific	SA-124	SIL/M	BLU	WHT			WHT	"2011, Silver Beaver Court of Honor"	200
Cascade Pacific	SA-125	GRY	BLU	WHT			RED	"Camp Pioneer 75th Anniversary, Jewel of the Cascades"	200
Cascade Pacific	SA-126	GLD/M	BLU	WHT			RED	"Camp Pioneer 75th Anniversary, Jewel of the Cascades"	100
Cascade Pacific	SA-127	BLK	BLU	GRN			TAN	"Ed Harris Memorial 2011", \$50 DN (auction)	
Central Florida	SA-133	BLK c/e	LT BLU	RED			BLK	"FOS 2011"	
Central Florida	SA-134	BLK	LT GRY/DK GRY	LT GRY			RED	"2011 FOS, Character Partner"	
Central Florida	SA-135	WHT	WHT	WHT			WHT	"2011 FOS, Character Partner"	
Central Florida	SA-136	WHT	NAVY	NAVY			WHT	"2011 FOS, Baden-Powell"	
Central Florida	SA-137	RED	BLU	GRN			YEL	"2008-2011, Quality Council, 100, Thank You for the Teamwork, President & Commissioner"	
Central Florida	SA-138	GRN	LT BLU	GRY			RED	"Philmont, 716-R, 2011"	
Central Florida	SA-139	WHT	LT BLU	GRY			RED	"Philmont, 716-R, 2011, Leader"	
Central Florida	SA-140	GRN	YEL	BRN			RED	"Wood Badge Training Center"	
Cherokee, TN	SA-121	SIL/M	R/W/B	BLU & RED/WHT			SIL/M	"Journey to Excellence"	100
Chester County	SA-12:1	RED/M	GRN	YEL			YEL	"Lead the Way, Loyal, FOS 2008", \$165 DN	
Chester County	SA-12:2	GLD/M	GRN	YEL			YEL	"Lead the Way, Loyal, FOS 2008", \$1000 DN	
Chester County	SA-13:1	RED/M	GRN	YEL			YEL	"Shape the Future, Helpful, FOS 2009", \$175 DN	
Chester County	SA-13:2	GLD/M	GRN	YEL			YEL	"Shape the Future, Helpful, FOS 2009", \$1000 DN	
Chester County	SA-15	RED	LT BLU	YEL			YEL	"Lifelong Learning, Friendly, FOS 2010", \$185 DN	
Chester County	SA-16	GLD/M	LT BLU	YEL			YEL	"Lifelong Learning, Friendly, FOS 2010", \$1000 DN	
Chester County	TA-17	RED/M	LT BLU	ORG			YEL	"Share the Vision, Courteous, FOS 2011", \$195 DN	
Chester County	TA-18	GLD/M	LT BLU	ORG			YEL	"Share the Vision, Courteous, FOS 2011", \$1000 DN	
Chicago Area	SA-79	GRN	WHT	YEL			GRN	"100th Anniversary, 1911 2011, Owasispe Scout Reservation"	
Chicago Area	SA-80	BLK	LT BLU	BLK			BLK	"Sons of Owasispe", 2011	
Chief Seattle	S-31	BLU	WHT				RED	"Scouts Meet Here", regular wear issue	
Cimarron	S-13	BLU	WHT	YEL			BLU	Tornado on left, wheat & cow on right	
Circle Ten	SA-31	WHT	GRY	GRY			BRN/YEL	"Epitome, Camp Staff"	
Circle Ten	SA-32	BLK	ORG	YEL			YEL	"James Ray Scout Reservation, Camp Leader"	
Columbia MOUNTAIN	SA-20	BLU	LT BLU/WHT	WHT			RED	"Friends of Scouting 2011, Bloomsburg, PA", \$75 DN	
Connecticut Rivers	SA-45	BLK	RED/ORG/GLD	BLK			WHT	"Prepared. For Life", 2011 FOS, \$16 DN	
Cornhusker	P-9	RED	LT BLU	YEL			RED	"16 Counties in Southeast Nebraska", Regular wear issue	
Crossroads of America	TA-25a	RED	TAN	RED			WHT	"F. O. Belzer unit, 1998", gld trim on webelos symbol, 54 x 129mm	
Crossroads of America	TA-25b	RED	TAN	RED			WHT	"F. O. Belzer unit, 1998", yel trim on webelos symbol, 58 x 121mm	

Council	Issue #	Border	Sky/Bkg	FDL	SE	BSA	Name	Issue Description	Qty
Dan Beard	SA-38	GRY	GRN TARTAN		YEL		YEL	"T3, Certified Leader"	
Detroit Area	SA-143:1	SIL/M	GRY	BLU			GRN	"Trail to Eagle", for Scoutmasters	50
East Carolina	SA-31	PUR	BLU	RED			PUR	"Thrifty", 2011 FOS, \$100 DN	
East Carolina	SA-32	GLD/M	BLU	RED			YEL	"Thrifty", 2011 FOS, \$250 DN	
Gateway Area	S-145	YEL	BLU	YEL			BLK	"Prepared. For Life.", regular wear issue	
Glacier's Edge	SA-28	BLK c/e	GRY	GRY			YEL/RED	"2011, Friends of Scouting, Thrifty", \$110 DN	
Glacier's Edge	SA-29	RED c/e	GRY	GRY			YEL/RED	"2011, Presenter, Friends of Scouting, Thrifty"	
Great Salt Lake	SA-226	GRY	LAV/WHT	WHT/ LT BLU			BLU	"Silver Beaver Association"	
Great Sauk Trail	SA-105	BLK	LT BLU	TAN			WHT	Model T	500
Great Sauk Trail	SA-106	BRZ/M	LT BLU	TAN			WHT	Model T	100
Great Smoky Mountain	SA-11:1	WHT	LT BLU/PNK	YEL			ORG	"Canoe Base 2004", contingent issue	
Great Smoky Mountain	SA-28:1	BLU	LT BLU/WHT	WHT			BLK	"Camp Buck Toms 1st Annual Winter Camp", attendees	
Great Smoky Mountain	SA-36:1	BLK	LT BLU	YEL			BLK	"2009 Friendly FOS"	
Great Smoky Mountain	SA-47	YEL	YEL	BLK			BLK	"Philmont 2010"	
Great Smoky Mountain	SA-48	RED	BLU	RED			RED	"Canoe Base 2010"	
Great Smoky Mountain	SA-49	ORG	BLU		YEL		WHT	"Woodbadge for the 21st Century, SR-1072"	
Great Smoky Mountain	SA-50	RED c/e	LT BLU				BLK	"2010 Centennial Service Project, Great Smoky Mountains NPS", issued jointly with Daniel Boone Council	
Great Smoky Mountain	SA-51	GRY	LT BLU	GLD/M			BLK	"Kind 2010, FOS", date error, \$250 DN	
Great Smoky Mountain	SA-52	TAN	LT BLU	GLD/M			BLK	"Kind 2010, FOS", date error, \$500 DN	
Great Smoky Mountain	SA-53	GRY	LT BLU	GLD/M			BLK	"Kind 2011 FOS", \$250 DN	
Great Smoky Mountain	SA-54	TAN	LT BLU	GLD/M			BLK	"Kind 2011 FOS", \$500 DN	
Great Smoky Mountain	SA-55	RED	LT BLU	YEL			ORG	"The Dawn of a New Century, University of Scouting 2011"	
Great Smoky Mountain	SA-56	BLK	BLK	YEL			YEL	"Philmont 2011"	
Great Smoky Mountain	SA-57	BLK	BLU	YEL			YEL	"2011 Campership Fund, Duty to God"	
Great Trail	SA-37:1	RED	BLU		BLK		YEL	"Friends of Scouting, Loyal, 1910 2006"	
Greater Alabama	SA-49	LT BLU	LT BLU/BLU		R/W/B		LT BLU	"2011 FOS, Friends of Scouting", \$250 DN	
Greater New York	SA-215	GRY	DK BLU				TAN	Tribute in light issue	
Greater New York	SA-216	GRY	DK BLU				TAN	Tribute in light issue, "Never Forget"	
Green Mountain	SA-30	SIL/M	R/W/B	WHT			YEL	"Friends of Scouting 2011, Leadership", \$100 DN	
Green Mountain	SA-31	SIL/M	RED/WHT	WHT			YEL	"Friends of Scouting 2012, Achievement", \$100 DN	
Green Mountain	SA-32	SIL/M	RED/WHT	WHT			YEL	"Friends of Scouting 2013, Character", \$100 DN	
Green Mountain	SA-33	SIL/M	RED/WHT	WHT			YEL	"Friends of Scouting 2014, Service", \$100 DN	
Green Mountain	SA-34	SIL/M	RED/WHT	RED			YEL	"Friends of Scouting 2015, Outdoors", \$100 DN	
Gulf Ridge	SA-55	BLU	NAVY/LAV	BLK			WHT	"Thrifty-Brave-Clean-Reverent", 2011 FOS	
Housatonic	SA-31	GRY	WHT	TAN			BLK	"Clean, Friends of Scouting, 2011", \$150 DN	
Inland Northwest	SA-95	RED	R/W/B	BLU			RED	"A Scout is Obedient, Mining the Treasure Within", 2011 FOS	
Inland Northwest	SA-96	BLU	LT BLU	WHT			BLU	"Xtreme Scouting, Camp Grizzly"	
Iroquois Trail	S-23	YEL	WHT/LT BLU	YEL, GRN			BLU	Feathers on wings are blk	
Iroquois Trail	S-24	TAN	WHT/LT BLU	GRN			BLU	Feathers on wings are brn	
Iroquois Trail	S-25	GRN	WHT/LT BLU	GRN			BLU	Feathers on wings are brn	
Lewis & Clark	SA-9	BLK	GRN TARTAN		YEL		BLK	"Wood Badge, C3-114-11-1"	350
Lewis & Clark	SA-10	BLK	GRN TARTAN		YEL		BLK	"Wood Badge, C3-114-11-1, Staff"	175
Lincoln Trails	S-17	GRN	LT BLU	LT BLU			GRN	Regular wear issue	
Longhouse	SA-39	BLK	WHT			RED	RED	"Staff, Sabattis Scout Reservation, I Survived - 2011"	25
Longhouse	SA-40	BLK	RED/BLU		TAN		WHT	"National Youth Leadership Training, Camp Woodland, New York"	75
Longhouse	SA-41	WHT	RED/BLU		TAN		WHT	"National Youth Leadership Training, Camp Woodland, New York"	75
Louisiana Purchase	SA-19	BLK	ORG	YEL			WHT	"Camp Attakapas, One Journey", individually numbered	100
Louisiana Purchase	SA-20	RED	LT GRN	YEL			WHT	"Camp T. L. James, One Path", individually numbered	100
Louisiana Purchase	SA-21	BLK	BLU	RED			WHT	"Go Native", individually numbered	100
Louisiana Purchase	SA-22	BLK	TAN	GRN			WHT	"One Adventure", individually numbered	100
Louisiana Purchase	SA-23	TAN	BLK	TAN			WHT	"One Council", individually numbered	100
Middle Tennessee	SA-15:1	WHT	RED	GLD/M			WHT	"Trustworthy", FOS	
Mississippi Valley	SA-27	RED	LT BLU	LT BLU			BLU	Bridge slanting to right with 4 thick footings	250
Mississippi Valley	SA-28	RED	LT BLU	LT BLU			BLU	Bridge with 4 thin footings	250
Mississippi Valley	SA-29	RED	LT BLU	BLU			BLU	Bridge with 3 footings	250
Montana	S-91	PUR	PNK/YEL	PUR		PUR	PUR	Regular wear issue	
Mount Baker	SA-57	PUR	PUR/GRN/GLD	GRN		BLK	BLK	"President's Excellence in Leadership, 2011"	50
Mount Baker	SA-58	RED	LT BLU		TAN		LT BLU	"Thrifty, FOS 2011"	
Mount Baker	SA-59	GRY	LT BLU		TAN		LT BLU	"Thrifty, FOS 2011"	
Mount Baker	SA-60	TAN	LT BLU		TAN		LT BLU	"Thrifty, FOS 2011"	
Mount Baker	SA-61	GLD/M	LT BLU		TAN		LT BLU	"Thrifty, FOS 2011"	
Northeastern Pennsylvania	SA-40	GRN	GRN	RED		WHT	WHT	"2011, Friends of Scouting", \$100 DN	
Norwela	SA-42	SIL/M	R/W/B	WHT			GLD/M	"Building America, With Each Eagle"	100
Occoneechee	SA-71	RED	R/W/B	YEL			BLU	"Eagle Scout"	500
Old Baldy	SA-53	GRN	TAN	RED, YEL			BLU	"Duty to Self, 1922 2006, 84 Years of Scouting FOS, A Scout is Brave Cheerful Clean Thrifty"	
Old Colony	SA-51:1	ORG	LT ORG			BLK	BLK	"Eagle Scout Class 2009"	250
Old Colony	SA-51:2	ORG	LT ORG			BLK	BLK	"Sponsor a Scout", \$205 DN	200
Old Colony	SA-53:1	LT GRN	LT ORG			BLK	BLK	"Sponsor a Scout", \$205 DN	200
Old Colony	SA-57	BLK	BLU			BLK	BLK	Dining Hall with termites	200
Old Colony	SA-58	SIL/M	BLU			BLK	BLK	Dining Hall with termites	100
Old Hickory	SA-19	GRY	DK BLU	WHT			WHT	"Cheerful", 2007 FOS, \$150 DN	
Old Hickory	SA-20	GRY	DK BLU	WHT			WHT	"Thrifty", 2008 FOS, \$150 DN	
Old Hickory	SA-21	GRY	DK BLU	WHT			WHT	"Brave", 2009 FOS, \$150 DN	
Old North State	SA-14:2	MAR	RED		RED		RED	"Trustworthy", 2004 FOS	
Old North State	SA-18:2	BLU	RED/WHT	BLU			WHT	"2007", honor troop issue	
Orange County	SA-294	GRN	LT BLU	LT BLU			WHT	"2011 Friends of Scouting, Friendly"	5000
Orange County	SA-295	GRN	GRN	GRN			GRN	"2011 Friends of Scouting, Helpful"	500
Orange County	SA-296	SIL/M	LT BLU	LT BLU			WHT	"2011 Friends of Scouting, Helpful"	100
Orange County	SA-297	GRN	LT BLU	LT BLU			WHT	"2011 Friends of Scouting, Friendly", error	5000
Orange County	SA-298	GRN	GRN	GRN			GRN	"2011 Friends of Scouting, Friendly", error	500
Orange County	SA-299	SIL/M	LT BLU	LT BLU			WHT	"2011 Friends of Scouting, Friendly", error	100
Orange County	SA-300	RED	ORG	PNK			WHT	"2011 Wiatava Lodge 13", 2011 auction \$50 DN	77

Council	Issue #	Border	Sky/Bkg	FDL	SE	BSA	Name	Issue Description	Qty
Orange County	SA-301	BLU	ORG	PNK			WHT	"2011 Wiatava Lodge 13", 2011 auction \$100 DN	67
Orange County	SA-302	YEL	ORG	PNK			WHT	"2011 Wiatava Lodge 13", 2011 auction attendee	127
Orange County	SA-303	SIL/M	GRN TARTAN		TAN		GRY	"2011 Wood Badge"	100
Orange County	SA-304	BLU	GRN TARTAN		TAN		GRY	"2011 Wood Badge"	
Orange County	SA-305	AQUA	GRN TARTAN		TAN		GRY	"2011 Wood Badge"	
Orange County	TA-306	BLU	LT BLU	YEL			BRN	"Wood Badge, W4-39-11-1, Perpetuating the Promise"	100
Orange County	TA-307	LT BLU	LT BLU	LT BLU			LT BLU	"Wood Badge, W4-39-11-1, Perpetuating the Promise", staff issue	
Orange County	SA-308	RED	WHT	WHT			BLK	"2011 Western Region Venturing Youth Conference, Hosted by Orange County Council", participant issue	200
Orange County	SA-309	LT ORG	WHT	WHT			BLK	"2011 Western Region Venturing Youth Conference, Hosted by Orange County Council", FR issue	100
Orange County	SA-310	BLK	NAVY	WHT			WHT	"Trailblazers/NYLT"	
Orange County	SA-311	RED	LT BLU	YEL			WHT	"Scout-O-Rama 2011, A Day of Doing it Yourself"	
Orange County	SA-312	BLU	LT BLU	YEL			WHT	"Scout-O-Rama 2011, A Day of Doing it Yourself"	
Orange County	SA-313	WHT	LT BLU	YEL			WHT	"Scout-O-Rama 2011, A Day of Doing it Yourself"	100
Orange County	SA-314	GRN	YEL	YEL			RED	"Venturing Out 2011", participant	100
Orange County	SA-315	YEL	YEL	YEL			RED	"Venturing Out 2011", staff	50
Orange County	SA-316	LT GRN	LT TAN	ORG			TAN	"2011 Orange County Fair, Let's Eat", participant issue	305
Orange County	SA-317	ORG	LT TAN	ORG			TAN	"2011 Orange County Fair, Let's Eat", committee issue	75
Orange County	SA-318	LT GRN	LT GRN	LT GRN			LT GRN	"2011 Orange County Fair, Let's Eat"	75
Orange County	SA-319	GRN	LT TAN	ORG			TAN	"2011 Orange County Fair, Let's Eat", prep team issue	45
Orange County	SA-320	YEL	WHT	BRN			WHT	"Schoepe Scout Reservation at Lost Valley, 2011, OCC"	
Orange County	SA-321	YEL	WHT	BRN			WHT	"Schoepe Scout Reservation at Lost Valley, 2011, OCC, Staff"	200
Orange County	SA-322	GRN	BLU	YEL			LT BLU	"SummitCorps 2011"	100
Orange County	SA-323	BLU	LT BLU	LT BLU			YEL	"Indian Summer MMXI"	100
Orange County	SA-324	BLK	MAR	MAR			BLK	"Philmont Scout Ranch 2011"	100
Orange County	SA-325	BLK	ORG	ORG			BLK	"2012 Michigan International Camporee & NOAC"	75
Orange County	SA-326	RED	ORG	ORG			BLK	"2012 Michigan International Camporee & NOAC"	50
Oregon Trail	SA-42	BLU	BLU	WHT			LT BLU	"Camp Baker"	
Oregon Trail	SA-43	GRN	PUR	WHT		PUR	PUR	"Camp Melakwa"	
Otschodela	SA-18:1	BLU	GRN TARTAN		YEL	WHT	WHT	"21st Century Wood Badge"	50
Otschodela	SA-47	YEL	TAN/GRY	RED			RED	"2011 FOS, Thrifty", \$50 DN	
Otschodela	SA-48	GLD/M	TAN/GRY	GLD/M			GLD/M	"2011 FOS, Thrifty", \$250 DN	
Otschodela	T-49	YEL	BLK		GLD		YEL	"1924 2011, Leatherstocking Country, Natty Bumppo"	
Otschodela	SA-50	BLK	R/W/B	YEL			YEL	"2011 Council Auction"	
Penns Woods	SA-6:1	GLD	LT BLU	GLD			GLD	"Friend of Scouting 2001"	
Puerto Rico	S-102	DK BLU	BLU		GLD		WHT	"Isla Del Encanto"	
Quivira	SA-42	BRN	BLU/GRN	YEL			WHT	"50 Years, QSR", 2011 FOS, \$125 DN	
Sam Houston Area	SA-59	BLK	LT BLU	WHT			YEL	"1912 2012, Sea Scout Centennial"	
Seneca Waterways	SA-8	BLK c/e	BLK/GRY	YEL			RED	"Camp Babcock-Hovey Staff"	
Sequoyah	SA-34	RED	WHT	RED			BLU	"Philmont 2011"	
Shenandoah Area	SA-62	YEL	RED	YEL			WHT	"Reverent, FOS", 2011, \$300 DN	
Theodore Roosevelt	SA-125	BLU	BLU	BLU			BLK	"2012, Sea Base Adventure"	100
Three Harbors	SA-1	BRN	BLU TARTAN		YEL		WHT	"Wood Badge, C3-634-11-1"	
Tidewater	S-52	RED	ORG/YEL				BLU	"100th BSA Anniversary"	
Tidewater	S-53	WHT	ORG/YEL				BLU	"100th BSA Anniversary"	
Tidewater	S-54	YEL	ORG/YEL				BLU	"100th BSA Anniversary"	
Tidewater	S-55	ORG	ORG/YEL				BLU	"100th BSA Anniversary"	
Tidewater	SA-56	BLK c/e	PUR			WHT	BLK	"1911-2011, 100 Years, FOS", \$167 DN, regular size	
Tidewater	SA-57	BLK c/e	PUR			WHT	BLK	"1911-2011, 100 Years, FOS", \$120 DN, miniature size	
Trapper Trails	SA-146	OLIVE	LT GRN	BLU			BLU	"Aspen Ridge, Hull Valley Scout Reservation"	
Trapper Trails	SA-147	LT GRN	LT BLU	LT GRN			GRN	"Camp Bartlett, 2011"	
Trapper Trails	SA-148	NAVY	BLU	TAN			WHT	"Browning High Adventure Base"	
Trapper Trails	SA-149	ORG	RED	WHT			WHT	"2011 Camp Fire"	
Trapper Trails	SA-150	BLU	LT BLU				RED	"Camp Hunt 2011"	
Trapper Trails	SA-151	RED	BLU	GRY			RED	"Kiesel Roundup!, 2011"	
Trapper Trails	SA-152	BRN	TAN	GRY			GRY	"Camp Kiesel"	
Trapper Trails	SA-153	BLU	LT BLU	BLK			RED	"Camp Loll, 2011"	
Trapper Trails	SA-154	LT GRN	GRN	LT GRN			LT GRN	"Camp New Fork, 2011"	
Trapper Trails	SA-155	RED	BLU	YEL			RED	"Celebrating 60 Years, Wadman Corporation"	
Twin Rivers	SA-132	LT GRN	LT BLU/BLU	RED			GRY	"2011 Fall Camporee"	150
Twin Rivers	SA-133	SIL/M	LT BLU/BLU	RED			GRY	"2011 Fall Camporee"	125
Twin Rivers	SA-134	GLD/M	LT BLU/BLU	RED			GRY	"2011 Fall Camporee"	75
Ventura County	SA-98	BLU	LT BLU	WHT		RED	RED	"BSA 100th Anniversary, Philmont 2010"	
Westark Area	TA-37:2	BLK	YEL	RED			RED	"2007, A Scout is Thrifty", FOS	
Western Colorado	SA-131	WHT	WHT/GRN		YEL		GRN	"WCC BSA, Colorado", woodbadge	
Western Colorado	SA-132	WHT	WHT/GRN				GRN	"WCC BSA, Cimarron N.M.", philmont	
Western Colorado	SA-133	WHT	WHT/GRN				GRN	"WCC BSA, Colorado", eagle scout	
Western Colorado	SA-134	WHT	WHT/GRN		YEL		GRN	"WCC BSA, Colorado, National Youth Leadership Training"	
Westmoreland-Fayette	SA-14	YEL	M/C	YEL			YEL	"Thrifty Brave Clean Reverent, 2011, Cub Scouts BSA", 2011 FOS, \$125 DN	
York-Adams Area	SA-30:1	BRN	TAN	BRN			GRN	"A Scout is Clean - Tuckahoe Campaign, 2008", FOS	
York-Adams Area	SA-30:2	BLU	R/W/B				WHT	"A 100 Years of Fun with a Purpose, BSA 2010, Friends of Scouting"	
Yucca	SA-86	RED	LT BLU	BLU			RED	"2011 FOS, Brave, Bridging the Gap"	



Chairman's and President's Message (Continued From Page 4)

The International Scouting Collectors Association (ISCA) will provide support for the patch trading venue by offering resource materials and information, logistic, planning and organizational support, and monitoring of the area(s) during the jamboree by providing ISCA members to be on staff as needed. ISCA has organized a team to support this activity. Jamboree staff positions are available.

The Collections merit badge will once again be sponsored by ISCA. It will be offered in an area adjacent to where the patch trading activity will occur and will include a number of displays that can be used for both the merit badge and also as a resource for the patch trading activity. Jamboree staff positions are available.

Check the ISCA website (<http://www.scouttrader.org/>) and the BSA Summit website (<https://summit.scouting.org>) for additional information.

So, if you are considering going to either NOAC, the NOAC trade-o-ree and/or the Jamboree, staff positions are available. For details or to express interest, contact Rick Bedsworth (kwtrdr@gmail.com) for the 2012 NOAC Trade-o-ree, and for the Collections MB at the 2013 National Jamboree and Craig Leighty (craig.leighty@gmail.com) for the 2013 Patch Trading activity at the jamboree.

**LAS VEGAS
INTERNATIONAL**
Scouting Memorabilia
exchange and show
ACES 2012



SEP 28 – 30
24 HOURS OF TRADING

OVER 3 DAYS

www.worldscoutingmuseum.org

Table info: KWTRDR@gmail.com

BADGE HOUSE
The international Brand for quality
**Embroidery & Sublimation Embroidery
Patches**

<http://www.badge-house.com>

**THE NOAC TOR IS ONLY A
FEW MONTHS AWAY**

**RESERVE YOUR TABLES
NOW AT:**

WWW.SCOUTTRADER.ORG

“IF YOU WANT A REAL SLIDE, GET A NEAL SLIDE”

John Koppen of Yamhill, OR (ISCA 0085)
David Wade of Shapleigh, ME (ISCA 7125)
Greg Rosalia of Rancho Cucamonga, CA (ISCA 0767)

are banding together to research and publish a Nealslide reference publication, for release possibly by late 2012.

The initial guide will be a full-color paper tome; we are looking anyone with relational database experience to help prepare a CD-ROM version as well.

We would like to solicit contributions from the collecting community for this book, specifically:

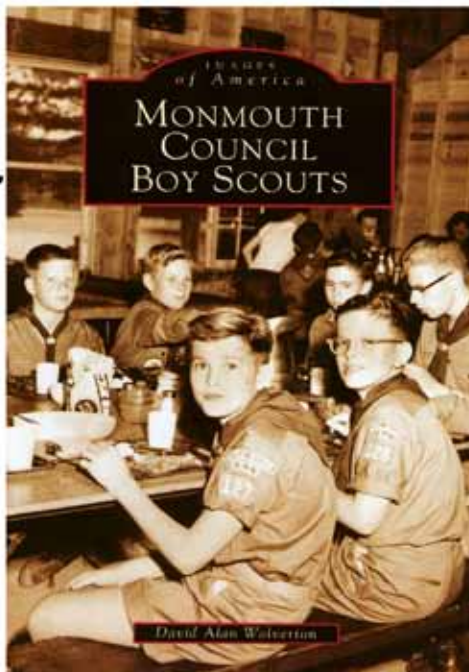
Photos/scans of rare/unusual Nealslides, in “.jpg” format, the higher the resolution, the better.

Biographical information about Charles Millard Neal, his company, Scouting involvement, etc. Samples/photos of molds and other tools used in manufacturing, etc. Samples/scans of advertising, correspondence, and other ephemera.

All submissions will be credited to the submitter. Contact information for each of us is contained in the ISCA Membership Roster.”



New Jersey Scout Museum



The New Jersey Scout Museum is pleased to announce the availability of a book showcasing the rich history of Scouting in Monmouth County, New Jersey. This entry in Arcadia Publishing's respected "Images of America" series, gives an inside look at an oft-ignored aspect of life in Monmouth County. Forestburg and Quail Hill are featured, and long-gone Scout camps such as Kanohwahke Lakes, Camp Burton, Camp Burton-at-Allaire, and Camp Housman are also covered.

With over 200 vintage photographs illustrating every aspect of the Boy Scout program from 1911 to the present, this book is sure to please any Scout or former Scout.

Table of Contents

Chapter 1: The Pioneer Years
Chapter 2: The Allaire Camps
Chapter 3: Forestburg Scout Reservation
Chapter 4: Quail Hill Scout Reservation
Chapter 5: Events
Chapter 6: Na Tsi Hi Lodge
Chapter 7: Cubbing and Exploring
Chapter 8: Adult Leaders

Quick Facts:

Author: David Alan Wolverton
Publication date: April 15, 2003
ISBN 0-7385-1171-4
Softcover, 128 pages

\$25



Order online today @ njsm.org

Shelby Patch Company, LLC



*Founded by Scouters,
Serving Scouts Across America*

- CUSTOM EMBROIDERED PATCHES
- EMBROIDERED GOLF SHIRTS
- RECOGNITION MEDALS & DRAPES
- EMBROIDERED SWEATSHIRTS
- EMBROIDERED NECKERCHIEFS
- SCREENED T-SHIRTS
- ACTIVITY PINS
- CUSTOM CHENILLES
- EMBROIDERED HATS
- BOLO TIES & KEY RINGS
- EMBROIDERED LANYARDS
- WALKING STICK PINS
- NECKERCHIEF SLIDES
- BULLION STYLE PATCHES

WE OFFER: GLOW IN THE DARK, METALLIC COLORS,
AND ULTRA VIOLET SENSITIVE THREADS

3825 Hunt Club Court
Shelby Township, Michigan 48316
586-781-4778 • Fax 586-781-3120

www.shelbypatch.com





Back Issues Now Available

ISCA Journal



Year	Month	Volume	#	ISSUE COVER STORY	Price	Quantity
2001	March	1 (16*)	1	Inaugural Issue of the ISCA Journal	2.50	
2001	June	1 (16*)	2	History...It's In The Cards	2.50	
2001	September	1	3	Patches of the 2001 Jamboree	2.50	
2001	December	1	4	History of the Chenille Part One	2.50	
2002	March	2	1	Targeting High Adventure	2.50	
2002	September	2	3	NOAC 2002	2.50	
2002	December	2	4	Charting Your Council's History	2.50	
2003	March	3	1	World Jamboree Thailand	3.00	
2003	June	3	2	Collecting Cub Scout Ranks	3.00	
2003	September	3	3	The Black Arrow Sash	3.00	
2004	March	4	1	Collecting On the Smaller Side: Diamond Hat Patches	3.00	
2004	June	4	2	Collecting Lodge Mugs	3.00	
2004	September	4	3	NOAC 2004	3.00	
2004	December	4	4	Khaki Crimped Merit Badges 1947-1960	3.00	
2005	March	5	1	Philmont Update	5.00	
2005	June	5	2	Collecting Early Council Insignia	5.00	
2005	December	5	4	Collecting Your Camp	5.00	
2006	March	6	1	James E. West, Chief Scout Executive 1911-1943	6.25	
2006	June	6	2	Ernest Thompson Seton, Chief Scout 1910-1915	6.25	
2006	September	6	3	NOAC 2006	6.25	
2006	December	6	4	BSA's First Handbook	6.25	
2007	March	7	1	William T. Hornaday Award	7.50	
2007	June	7	2	Philmont Update	7.50	
2007	September	7	3	The Metal Turk's Head Neckerchief Slide	7.50	
2007	December	7	4	2007 World Jamboree	7.50	
2008	March	8	1	ISCA's 5 th Convention & Dallas TOR	7.50	
2008	June	8	2	Segregated Scout Camps	7.50	
2008	September	8	3	Collecting Community Strips	7.50	
2008	December	8	4	Collecting National Officer Issues	7.50	
2009	March	9	1	Theodore Roosevelt, Chief Scout Citizen	7.50	
2009	June	9	2	Scouts De America	7.50	
2009	September	9	3	2009 NOAC	7.50	
2009	December	9	4	Early Kansas City Scout Camps	7.50	
2010	March	10	1	2009 NOAC Staff and Activity Issues	7.50	
2010	June	10	2	Scouting For Fun (Collecting Scout Comic Books)	7.50	
2010	September	10	3	2010 National Jamboree	7.50	
2010	December	10	4	Camp Arataba – The Final Years	7.50	
2011	March	11	1	Happy Birthday ISCA	7.50	
2011	June	11	2	Life and Times of Scouting's Camp Madron	7.50	
2011	September	11	3	Collecting Lodge Totems	7.50	

*ISCA Journals Vol. 1, #1 & #2 were published under the ASTA Star registry, so they also have the numbering ASTA Star Vol. 16, #1 & #2

Quantities are limited and subject to prior sale.



10% Discount on 10 or more issues

Inquiries: ISCAfinance@gmail.com

Send payment to:
ISCA Back Issues
 c/o Tod Johnson
 P.O. Box 10008
 South Lake Tahoe, CA 96158

Postage & Handling

One Issue	\$2.50
2-5 Issues	\$4.95
6-12 Issues	\$9.20
13 or more	\$13.80

Total Order	\$
Discount	
Postage	
Total Order	\$

Name _____ ISCA # _____

Street Address _____

City _____ State _____ ZIP _____

Email Address _____

David W. McIntyre
Collecting BSA Handbooks

214 Paterson Rd, Fanwood, NJ 07023

david@davidmcintyre.org

cell: 908-451-0650

work: 212-810-5443

Paying "High Market+" prices for great examples.
(No pages missing, etc)

Primary Needs:

1910 Waldorf Astoria BSHB-00-01LB
1911 Seton "PRICE 25 CENTS NET" (one line) BSHB-00-01SB-C
1913 6th printing 5/31/1913 BSHB-01-06SB
1913 8th printing 12/31/1913 BSHB-01-08SB
1928 7th printing 11/1928 BSHB-03-07SB
1929 9th printing 4/1929 BSHB-03-09SB
1952 5th printing 6/1952 BSHB-05-05SB

Other Needs:

Everyboy's Library (other than 1914, 1915, 1919, 1923)

4th Edition (1940 through 1946)

Printings with "Distributed by American News Co" on spine
Many "starred" versions (check the last page)

Hardcover editions (nearly all, including modern printings!)_
Signed editions, special bookplates, etc.
Any "Slip Cover" editions.

noelle3

Top Rated Powerseller

More than a decade of experience selling Boy Scout Memorabilia

LET ME SELL FOR YOU!

dawns@sisna.com

801-750-2356

Dawn N Smith

<http://www.dawnsmithebaysales.com>



'The Jersey Trader'

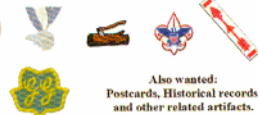
I collect **everything** from the New Jersey Boy & Girl Scouts including, but **NOT** limited to:
Order of the Arrow,
OA Section, Council, District and Camps
(no activity patches, please).

Randall D. Holden

586 CHESTNUT STREET
ORANGE, NJ 07050

Phone: 973-280-6425

e-Mail: jerseytrader@hotmail.com



Also wanted:
Postcards, Historical records,
and other related artifacts.



**New Jersey
Scout Museum**

705 Ginesi Drive

Morganville, NJ 07751

www.NJScoutMuseum.org



Trustee/Historian for the NJSM

Dr. Gene Berman

88-01 35 Ave. Jackson Heights NY 11372

(718) 458-2292: eugeneberman@verizon.net

Looking For:

ORDER OF THE ARROW

551 "Y" Neckerchief, #551, BUFFALO, possible troop neckerchief
may also just be an oval patch off the neckerchief.

NEW YORK CITY OA

LODGE 4 - Ranachqua C-1 Large Green Chenille (6-9 inches tall)

LODGE 24 - Shu - Shu Gah, Oseetah Neckerchief, yellow with red piping and gray silkscreen - Oseetah patch green leather, gray rock.

NYC COMMUNITY STRIPS-SHAPED LIKE RED AND WHITES

Air Scout - NYC/ Queens, The Bronx, Manhattan

Sea Scout - Blue wool/white letters- NYC/Queens, NYC/Staten Island

Red and White - Homemade private issue- Staten Island, NY
(one line across)

Red and White - SUFFOLK COUNTY / LONG ISLAND

TMR

Ten Mile River Pre 1960 Camp Staff Neckerchiefs/Aquehonga- 1949, 52 (tartan have patch), 59 Davis Lake- 1959, Kernochan- 1954, Rondack- 1959, Man (not Manhattan 52), Ranachqua- 49, 50 Unit C, 55, TMR Headquarters 1949-1953 1956-1958

I will pay amazing prices for my needs. I have excellent OA and CSP dupes. I will pay in four figures for some of my needs and many in three figures as well. I also pay very high fees for information leading to my acquiring my needs.

patchcamp.com

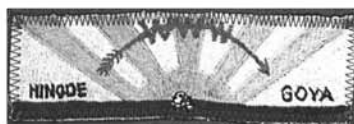
The top internet directory
for Scout patch collecting



Since 2000, your best starting
point for patch searches and news

Far East Council – Buying / Trading

Paying **TOP DOLLAR** for these needs:



498-X1 & X2 (twill/solid rectangles)



498 – N8 & N5.5 (red bibina)



498 – A2 & A3



498 – F1 (twill sky, solid emb water)



Blue & Gold
Clark Air Base strips



P.I. KRS Strip



Ryukyu Islands BWS



Council Patch w/ Fdl's



Mayon Chapter JP

Bob Cylkowski
1003 Hollycrest Drive
Champaign, IL 61821-4205
Phone (217) 778-8109

www.fareastbob.com

WANTED!



WILL BUY OR TRADE FOR ALL CALDWELL
JEWELRY OA TOTEM PINS.

- * THESE GENERALLY HAVE THE LODGE TOTEM
ATTACHED TO AN ARROW BY A CHAIN.
- * THESE ARE GENERALLY HALLMARKED ON THE
REVERSE SIDE OF THE TOTEM "J E CALDWELL."
- * LOOKING FOR ANY SUCH TOTEM PINS
FROM ANY LODGE.
- * SILVER OR GOLD.
- * BROTHERHOOD OR VIGIL.

Thank you! - Please contact:

John Ortt (ISCA # 3106)
968 Lindsley Drive
Virginia Beach, VA 23454
757-496-9540
jortt@cox.net



26th Annual

LONE STAR TRADEOREE

Funds Benefit Local Scout Programs

Friday June 1st
Saturday June 2nd

All Proceeds Benefit
Local Scouting Programs
Over 150 Attendees in 2011 !!!

Collections MB 7:00 pm 06/01/2012
Art MB 7:30 pm 06/01/2012
Who will be our newest Legends
honoree?

www.lonestartor.com

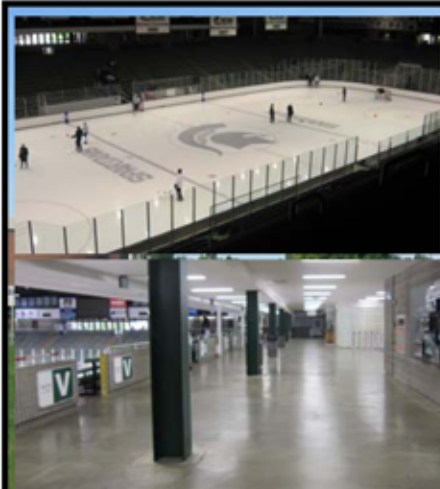
John Ryan
ISCA Southern AVP 2
817.939.5673
thetexaswebguy@yahoo.com

2012 NOAC ISCA Trade-O-Ree

Sponsored by International Scouting Collectors Association (ISCA)

The Biggest Scout Memorabilia Show of the Year !

Lodge Contingents - Come to NOAC Early



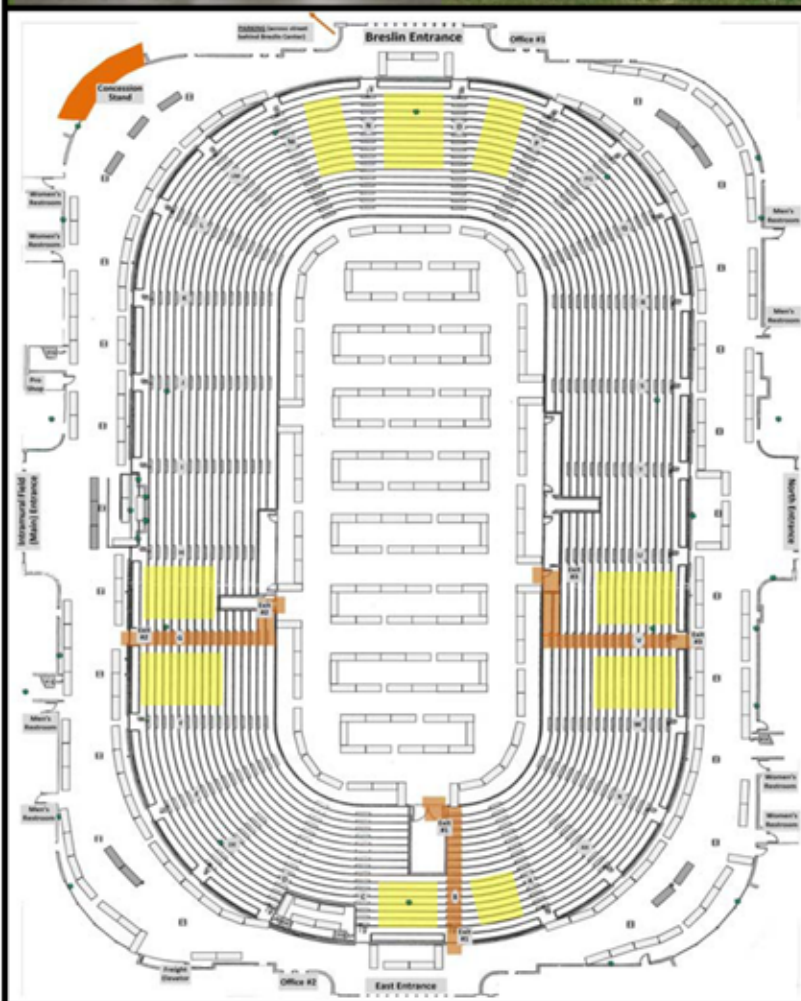
Munn Ice Hockey Arena



Michigan State University

1 Chestnut Road

East Lansing, Michigan 48824



- **Dates/Times (no admission fee):**
 - Friday, July 27th (3:00 PM - 11:30PM)
 - Saturday, July 28th (8:00 AM - 11:30 PM)
 - Sunday, July 29th (8:00 AM - 11:30 PM)
 - Monday, July 30th (8:00 AM - 4:00 PM)
- **Buy/Sell/Trade Scouting Memorabilia (approximately 300 tables available)**
- **FREE area each day for Lodges - (special area for lodges to sell lodge memorabilia)**
- **Reserve motel rooms using special trade-o-ree block rates**
- **Memorabilia training classes and seminars available on Saturday, Sunday and Monday**



For additional information: <http://www.ScoutTrader.org>

Additional NOAC Trade-O-Ree Info / Table Reservations

OVERVIEW:

- Air-conditioned arena - this will be the place to be if it's hot outside
- Attendees can use any of the four entrances on the concourse level / with 3 routes to main floor ice area
- Wi-fi available throughout the building / concession stand available for purchase of food
- Parking: Located across the street behind the Breslin center. University parking fee will be charged for each day (we're working to secure special event parking rates).
- Main floor ice area will be covered with a special 1" thick homosote board to insulate from the ice
- Blocks of hotel/motel rooms with great rates have been reserved - details on the ISCA website

VENDOR TABLE RENTAL & INFORMATION:

- Detailed registration details including a layout map will be available on the ISCA website
- If done on-line, you will be able to lock in a priority for picking your specific tables (based on date of reservation)
- Registration will go live as announced to ISCA members (via email - make sure we have your current email) and also on the ISCA website. Priority will be given to ISCA members and people reserving multiple tables. The only method of payment when reserving on-line will be PayPal. Note: you do not have to have a PayPal account to use the service, just a valid credit card is required. Specific registration details will be on the website.
- Table Pricing:
 - Center tables in the ice hockey main floor area are \$100.00 each
 - Wall tables in the ice hockey main floor area and all tables on the concourse level are \$125.00 each
- Table rental fee is for all four days of the trade-o-ree (no day fee) and full payment must be made at the time making the reservation. Quantity of tables is limited to that approved by the Fire Marshall.
- Electrical outlets are available at select locations (none available in the main floor ice area) - see online map
- All tables are 8 foot / wall tables in the ice main area can use the glass to tape up items
- Vendor set-up will be Noon to 3:00 PM on Friday, July 27th / Vendors with tables on the concourse level will enter through the East entrance / Vendors on the ice main floor area will use a loading dock on the ground floor
- ISCA is not responsible for collecting or coordinating for the payment of any taxes that may be due by vendors. Vendors are responsible for any and all taxes as required.

FREE LODGE AREAS: (Advance registration desired, but not required - just send an email to craig.leighty@gmail.com)

- Lodges can sell lodge memorabilia during the trade-o-ree for FREE (advance registration not required).
- Only memorabilia owned by the lodge may be sold and the area must be staffed by lodge youth with one adult in attendance (if desired) for supervision. No trading will be allowed.

VENDOR REGISTRATION (use only if submitting by mail) - - PLEASE PRINT

NAME: _____ **ISCA Member (Y/N)?** _____ **ISCA # (if known)** _____
Street: _____ **City:** _____ **State:** _____ **Zip:** _____
Cell Phone: _____ **Hone Phone:** _____
BSA Reg. #: _____ **Email:** _____

Preferred method for vendors to reserve table(s) is on-line on the ISCA website. If you reserve via mail, we will assign you your table(s) based on order of receipt and will notify you if you have provided a valid/readable email address.

Send check and this application form to:

ISCA
 PO Box 10008
 So. Lake Tahoe, CA 96158

Questions? Contact Craig Leighty at:
Craig.Leighty@gmail.com

Note: List name and cell phone for table support personnel on the reverse side

<u>Qty</u>	<u>\$ Amount</u>
I need: ___ Concourse Tables at:	\$ 125.00 each: _____
I need: ___ Ice Area Wall Tables at:	\$ 125.00 each: _____
I need: ___ Ice Area Center Tables at:	\$ 100.00 each: _____
Total Remitted: _____	

ISCA CODE OF ETHICS

All members of the International Scouting Collectors Association (ISCA) subscribe to a Code of Ethics to insure fair trading practices amongst its members. All members sign a statement subscribing to this Code.

I will:

Set an example in which we all can take pride.

Consciously, fairly represent items of Scout memorabilia.

Always follow the rules of the event that apply to trading.

Extend the hand of friendship to all collectors.

Trade or sell no patch that I know to be a fake or reproduction without disclosing the fact.

Help new collectors get started.

Impress on new collectors the importance of ethics in trading.

Currently be eligible to be registered in Scouting.

Strive for fairness in all actions consistent with the Scout Oath & Law.